

antarya

REGIONAL AWARDS
2024



IIID BANGALORE REGIONAL CHAPTER



INSTITUTE
OF INDIAN
INTERIOR
DESIGNERS

Bangalore Regional Chapter



antarya

REGIONAL AWARDS
2024



MANAGING EDITOR

Dinesh Verma

CONTENT EDITOR

Nandhini Sundar

EDITORIAL BOARD

Gunjan Das, Kavita Sastry, Mahesh Chadaga

DESIGN & ART DIRECTION

Deval Maniar

www.devalmaniar.work | deval.work@gmail.com

PRINT

Gaptech Press, Bangalore

www.daxgap.com | girish@daxgap.com

PUBLISHER

IIID BANGALORE REGIONAL CHAPTER

N G ASSOCIATES

302, 3rd floor, Riverstone chancellor,

50 Sivanchetti Garden Road, Halasuru,

Karnataka 560042

COPYRIGHT

This book contains the award winning architecture & Interior design projects of Antarya Regional Awards 2024. The copyright of all the images and drawings are held by the respective designers and IIID BRC has permission from the concerned designers to publish the same. The copyright of the book as a whole is held by IIID BRC.

All rights are reserved. No part of this publication may be reproduced, stored in a retrieval system or transmitted in any form or by any means without the written permission of the publisher, nor be otherwise circulated in any form of binding or cover other than that in which it is published, and without a similar condition being imposed on the subsequent purchaser.

A BEFITTING *TROPHY*



The trophy chosen for the Antarya Regional Awards not only commemorates the golden Jubilee of IIID but also serves as a personalised memento, being customised for each of the winners. The trophy is designed as a disc where the circle represents infinite collaboration and the 50 spokes featuring on one side of the circular formation portrays 50 years of IIID.

CHAIRPERSON SPEAKS



GUJAN DAS

The second edition of the Antarya Regional Awards 2024, supported by our Platinum Innercircle partners MCI and Twiggr, received over 100 entries—making this edition larger and more competitive than ever before.

Open to all IIID members (Architects and Interior Designers) practicing in the Bangalore region, as well as those from across India with projects based in Bangalore, the awards span 10 categories that celebrate local talent and promote exemplary design practices.

Our distinguished jury—Ar. Chitra Vishwanath, Ar. Sanjay Mohe, Ar. Milind L. Nulkar, Ar. Dimple Mittal, and Ar. Nisha Mathew Ghosh—were highly impressed by the calibre and sophistication of the submissions. Winners were selected through a rigorous two-day jury process held amidst the scenic hills of Chikkamagaluru.

The 20 winning design practices were honoured at the awards night on the final day of Designuru 4.5, which also featured an inspiring keynote by Sr. Robert Greenwood of Snøhetta.

The Antarya Regional Awards are rapidly gaining prestige and recognition. We look forward to raising the bar even higher in the next edition.

With gratitude,

Gujan Das
Chairperson IIID BRC, 2023-25
info@ngassociates.in

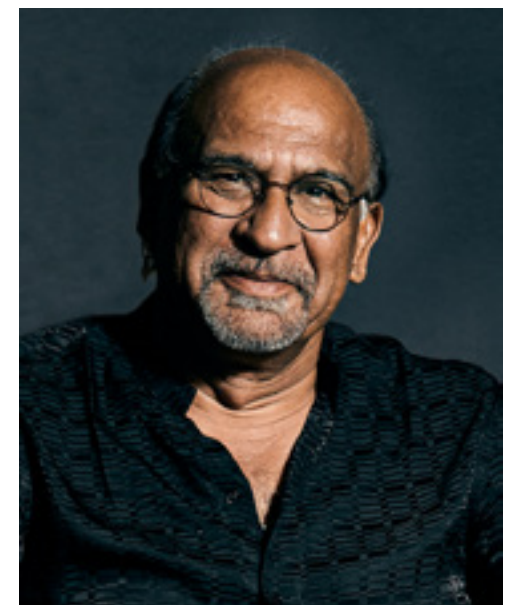
FROM THE MANAGING EDITOR'S DESK

The overwhelming response to our maiden awards program inspired us to make Antarya a larger and more accessible platform—one that celebrates and encourages professionals for their exemplary projects, whether in Bangalore or beyond.

An eminent jury evaluated submissions based on clarity of style and purpose, innovation, sound reasoning, and the ability to influence the public as users. At IIID – Bangalore Regional Chapter, the Antarya Regional Awards are more than just physical mementos; they are recognition of the meaningful work being done by professionals. To honour this, we publish the winning projects for the world to see, giving awardees a lasting sense of pride.

The bi-annual Antarya Regional Awards will continue every alternate year expanding in scope and inclusivity. We look forward to increased participation, greater innovation, and ever-evolving design excellence in the years to come.

Dinesh Verma
verma@acegrouparchitects.com



DINESH VERMA



Redefining spaces WITH NATURAL STONE



With a curated product collection of over 600 types of natural stones in marble, granite, quartzite, travertine, limestone, onyx, mother of pearl and a range of semi-precious stones sourced from over 42 different countries, **Marble Centre International (MCI)** is one of the leaders in the natural stone retail segment in the country and has the distinction of being the largest stockist in the country for fully processed and finished marble slabs. It is also one of the largest importers of natural stones in the country, sourcing its exquisite range from some of the finest quarries in the world.

Founded in 1989 by **Mr Rajkumar Ladha**, along with his younger brothers **Giriraj Ladha** and **Om Prakash Ladha**, MCI comes with over 35 years of experience and product knowledge and has carved a niche for itself as a pioneer in the imported natural stone industry in the country. **Directors Rahul Maheshwari and Gaurav Maheshwari** are

the second-generation leaders at **MCI**, together forming a formidable team, driving the next level of change and transformation through new initiatives and expansion of the enterprise.

Year 2022, saw **MCI** opening its astounding Experience Centre where experience zones prevail for key living areas such as the bedroom, living room, bathroom, dining, kitchen, bar, walk-in wardrobe, study. The Experience Centre not only offers the display and experience of some of the rarest and most sought natural stone collection but features as a testimony to **MCI's** unstinted commitment to excellence, thought leadership and customer satisfaction.

Besides the excellent, unmatched collection displayed in the experience zones, the centre provides to the customer, unique application ideas in natural stone with expert guidance on the same. The experience centre showcases



marble as an aspirational luxury lifestyle product and a versatile material that can be fused into any section of an interior. This enables the customers to visualise and experience physically the real life applications of natural stone, where it also proves to be inspirational in terms of adopting it in a creative manner in their individual spaces.

Having started its business operations on a 5000 Sqft stockyard, **MCI** has now grown to host over 2.5 lakh Sqft space of showroom and gallery space, spanning 5 locations in Bengaluru, with projects stretched across the country. The range and varieties of natural stone offered likewise has now doubled in both natural stones segment as well as semi-precious stones. **MCI** recently expanded its operations to foray into the porcelain segment by tying up with global majors such as Atlas Concorde of Italy and also into luxury home décor segment by tying up with Objectto.

Given its uncompromising commitment to delivering excellence in the product as well as the range offered, **MCI** stands out as a market leader in providing the very best in imported natural stone to the customer. Being an ISO 9001:2000 certified company, the approach and functionality of **MCI** rests on the key planks of moral integrity, product expertise, providing consistent quality and unwavering commitment.

This unstinted focus on quality has brought in place a stringent quality control system based on a highly customised, multi-step grading system. Only the highest grade of raw material is selected and the best of the stones with minimal defects and variations are chosen. Every block of natural stone is processed in state-of-the-art factories

in the stone's country of origin or **MCI's** partners in Italy and Turkey. The rigid, international compliance standards put in place ensure only the stones finished to perfection are imported and sold by the company.

To be abreast of changing lifestyles, tastes, preferences, strong emphasis is laid on product and category development. To meet this requirement and fulfil the expectations, **MCI** stocks the widest variety of natural stones across all stone types. With a collection comprising of only finished slabs, **MCI** is the largest stockist for pre-polished and fully finished slabs in the country to facilitate the right selection.

A pioneer in the imported marble category in the country, with over 35 years of experience and knowledge, **MCI** has built a strong global network and relationship with suppliers. Coupled with this is its hands-on management team spread across two generations, bringing in the best practices of the old and new, where high levels of professional standards in systems and processes are brought in place. This has enabled the company to steer ahead consistently, meteorically with transparency, trust and respect earned from across the country.

When it comes to customer satisfaction, **MCI** stands tall, being a rigorous driver of excellence in quality of product as well as delivery and service. The company's unwavering commitment to values of integrity and transparency combined with professional and ethical standards and systems has enabled it to rest on a strong plank of goodwill and trust earned from across the country. Over the last three decades, the brand has carved a niche for itself, the name built purely on word of mouth, ensuing from the immense customer satisfaction that has lasted decades after purchase.

Bringing in place an exemplary Experience Centre to display its product and offer the customer a unique visual experience of usage of natural stone in different functional spaces, the mode of retail opted is both inspirational as well as interactive. The Experience Centre hosts 10 luxury experience zones to showcase its spectacular collection of natural stones. This is tuned to meet the changing customer expectations as well as initiate a retail experience which explores the various possibilities of use in an aspirational luxury living.

An expansive product range



Expansive stone variety

At the heart of the **MCI** reputation and its high customer experience and satisfaction lies its spectacular collection in natural stone which offers a distinctly superior quality in every single product that is comparable to the highest world standards. Each slab is identified and finished to the highest stringent international quality standards before being imported to become part of **MCI** collection, a practice that is not oft seen as standard in this industry.

The collection, besides being unique, handpicked, comes with a range of varieties that is exhaustive in both width and depth in each category to cater to varied tastes and preferences, permitting flexibility in adapting to differential design and décor styles, themes and applications. Added to this exclusive and varied range of offerings are the customised finishes meeting personalised requirements that permit self-expression and signature statements.

THE EXCLUSIVE COLLECTION

MCI has on offer an exclusive collection of natural stones in marble, onyx, granite and other varieties to meet the needs of those customers who are looking to infuse a sense of exotica into the interiors through a unique, almost poetic rendition in stone. A handful amongst the many that



Jasmine White

capture the eye are Statuario, Nolte Blue, Jasmine White, Golden Macaubas, Bianco Lasa.

JASMINE WHITE

A natural masterpiece originating from Turkey, Jasmine White is known for its smooth whitish grey base contrasted by streaks of crimson veins, creating a surface that is both ethereal and captivating. Available in four unique variants of classic Jasmine White, Jasmine Grey, Jasmine White Linea, Jasmine Michelangelo, this stunning marble marks a poetic balance of drama and delicacy. With its rich textures, it proves to be ideal for countertops, mosaic work, monuments, accent walls.

NOLTE BLUE

A rare cerulean beauty in **MCI** collection, unearthed from the finest quarries in Turkey, Nolte Blue has the power to transform any space with its glacial elegance and inky hues of blue and white. Its calming blue canvas, delicately traced with abstract white veining, evokes the calm of open skies and quiet waters, fitting into both contemporary and classic interiors. **MCI** offers a range of variants such as the Nolte Blue, Nolte Gold, Blue Planet, each featuring soft subtle veins or dramatic swirling patterns to make a bold statement. Be it a feature wall, a graceful floor or an exotic



Statuario



Bianco Lasa

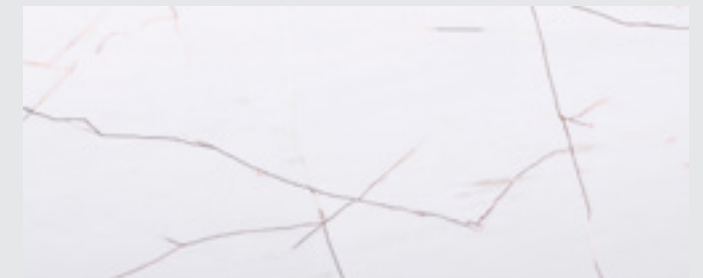
bath area, the marble serves as the fine differentiating element in the interior.

STATUARIO

Sourced from the mountains in Carrara, Italy, Statuario features timeless beauty and artistic mastery, with none other than the Grandmaster, Michelangelo having chosen this marble to sculpt his masterpiece, David. **MCI** hosts a vast and meticulously curated collection of this rare stone, its refined varieties such as Statuario Wow, Statuario Macchia Vecchia, Statuario Joy, Statuario Veneto, Statuario Linea, where the palette of this rare marble spans from the coolest to the warmest whites, effortlessly adapting to both contemporary and classic spaces. Its lustrous white surface comes with soft grey veins that is both subtle and bold, expressive, bringing a quiet grandeur to the space, be it the kitchen, the living area, the patio or even the bathroom.

GOLDEN MACAUBUS

Few natural stones have the capacity to capture natural beauty like Golden Macaubus. Originating from the rich quarries of Turkey, it is a celebration of soft luxury and



Golden Macaubus

timeless elegance where each slab comes with a unique character to showcase the nuances of nature's beauty. **MCI** offers it in five unmatched variants of Golden Macaubus, White Macaubus, Golden Macaubus Venato, Sahara Gold, Bianco Rose, featuring subtle pencil stroke veins to soft bronze accents, wispy coral veins flowing through creamy white base. Its subtle layered tones make it an ideal choice for flooring, as a statement wall or surfaces that aim to capture the eye.

BIANCO LASA

A rare masterpiece forged beneath the ancient terrains of the Orient, this exquisite white calcite marble features in five exclusive collections, each revealing a distinct expression of nature's artistry. A canvas of pure white with delicate veins, Bianco Lasa creates an interplay of light and shadow to evoke a sense of tranquillity where its signature ivory tones and calming grey patterns serve to be mood uplifting. While some feature soft grey or bluish veins and others bolder black veins, this exotic marble becomes the centrepiece in any space, making it an apt application for walls, as artistic murals, exotic flooring compositions.

A DISPLAY OF THE EXOTICA

MCI has on offer a range of exotic and semi-precious stones that prove to be hard to resist, transforming the spaces into a statement of art where nature’s undiluted artistry is displayed in all its glory within the subtle speak of an unmatched interior.



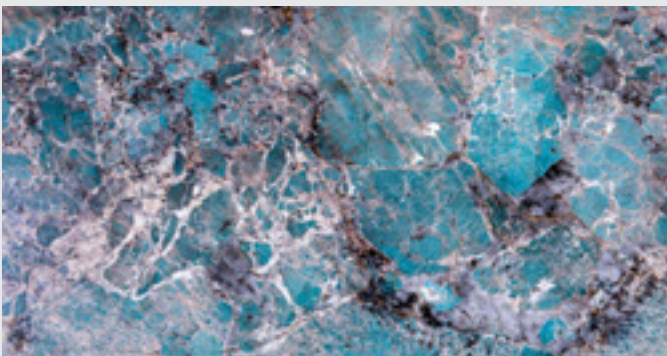
Amazonico Nuevo

AMAZONICO NUEVO

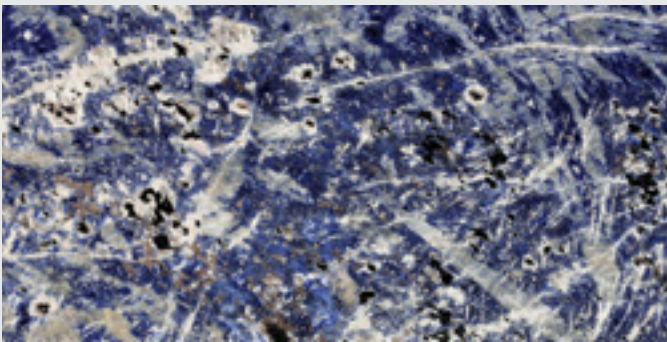
Its presence is sheer drama in the interiors, given its visual symphony of green waves, dense mineral formations that echo the rich canopies of the forest and moss-covered earth. Quarried from Brazil, Amazonico Nuevo comes with a palette of deep jungle greens, earthy olive hues, moss like tones, interspersed with soft white veins that resemble frozen river cracks, where subtle golden streaks weave through the surface to lend warmth and an organic depth. It serves as an ideal choice where contrast and impact are key factors in the design conceptualised, featuring as a dramatic accent on walls, sculptural furniture.

AMAZONITE

Hailing from the lands of Brazil, Amazonite evokes the raw beauty and shifting temperament of the tropical waters. Its vivid turquoise-blue base is interwoven with delicate white veins that ripple across the surface like churning waves breaking against the shore. The subtle swirls of grey and black formations add depth to the layers in each slab, creating a sense of motion and mystery. Though appearing fluid in visual form, Amazonite is incredibly resilient, making it ideal for high traffic areas. It is perfect for countertops,



Amazonite



Lapis Lazuli

feature walls, flooring, lending a sense of calm to the space to evoke creativity and self-expression.

LAPIS LAZULI

Valued highly by Egyptians, Sumerians, Greeks from time immemorial, Lapis Lazuli serves as a symbol of divine protection and artistic grandeur. Sourced from Brazil and processed in Italy, this semi-precious stone mesmerises with its deep celestial blue, interwoven with streaks of white, grey and black to resemble the abstract brushwork on a vibrant canvas. Ancient belief accords it powers to boost confidence, clarity and communication. Its bold hues and artistic textures make it an ideal choice for statement furniture.

FINISHING MATTERS

While natural stones come with their own unmatched beauty, specific treatments on the surface can bring about the play of textures and finishes, enhancing the aesthetic appeal, besides addressing functional purposes such as anti-skid. MCI offers a range of finishes in natural stone, each adding another layer of patterns over the material. Based on the technology, processes and treatments used, different finishes are given to the natural stone where it can transform some of the materials completely. These finishes are also customised to tie in with materials used in the interiors such as veneers, fabric, metals, either to contrast or complement as well as meet individual preferences.

KALEIDOSCOPE FINISH

A symphony of prismatic precision and a mesmerising display of ever-changing patterns and light, Kaleidoscope finish is a set of geometric forms that unfold like facets of a gemstone. Akin to a prism, the angular cuts and faceted design reflect light in unexpected directions. When light is passed over it, the stone reveals new depths, highlighting from every angle.

DRIFT FINISH

Harmonising the movement on a calm surface of water stirred by a gentle breeze, the Drift finish comes with a graceful flow where the contours bring in an organic rhythm, transforming the stone to appear almost fluid. Each wave pattern is carved with precision, capturing a sense of continuous motion that feels meditative. The undulating pattern interacts with light to cast shadows that shift through the day, giving the illusion of the stone being in motion.



RIPPLE FINISH

Mirroring the gentle patterns formed when a drop of water disturbs the stillness of water, the Ripple finish evokes the ebb and flow of movement, the delicate contours rippling across in soft fluid patterns. The finish creates the sensation of being seated by the shore, watching the ripples in the water dance across the surface.



LAUNCHING ANEW

MCI is strongly noted for being one of the first in the country to introduce new products in the natural stone retail industry. It has a range of new launches in natural stone, each stunning in visuals, with a deep history in origin. Sourced from quarries across the world, the natural stones and semi-precious stones astound the interiors, garnering unstinted attention with their natural beauty and textural finishes. Some of the new launches include Pallisandro Skyline, Bianco Nolte, Velluto Aqua Onyx, Azul Ava, Polaris Verde, Tiger Patagonia.

VELLUTO AQUA ONYX

The Iranian onyx with its soft palette of pale blues, silvery greys and gentle amber veins gives the feel of a painting in motion, evoking a sense of underwater landscapes.

AZUL AVA

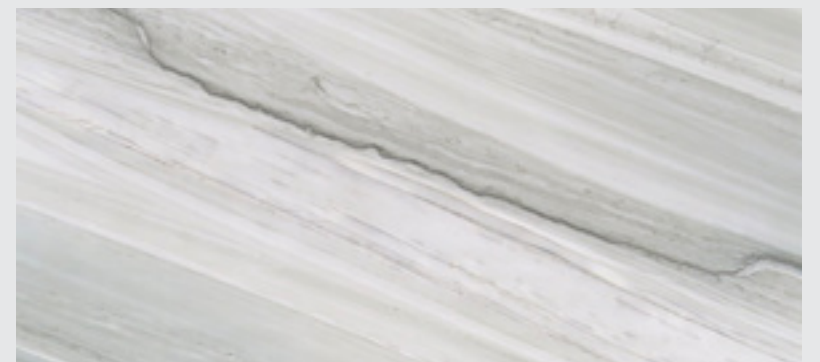
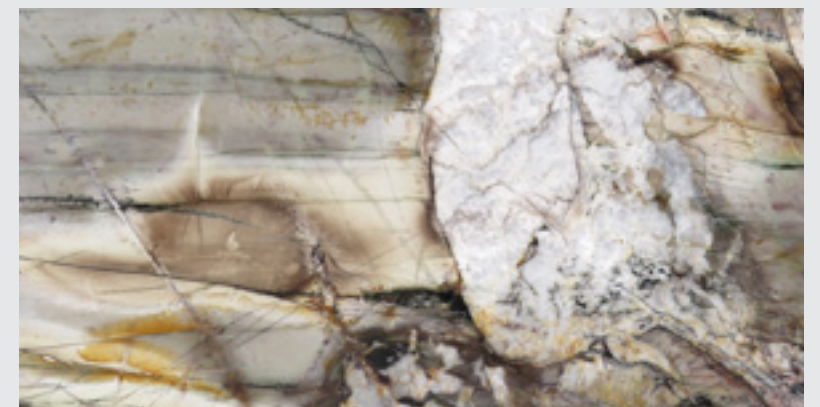
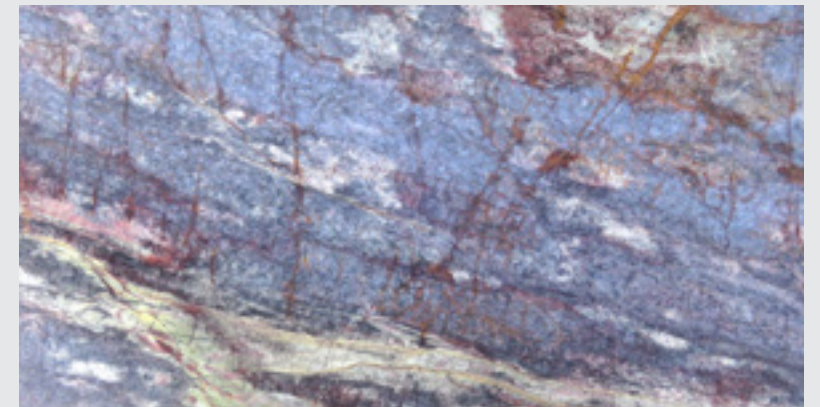
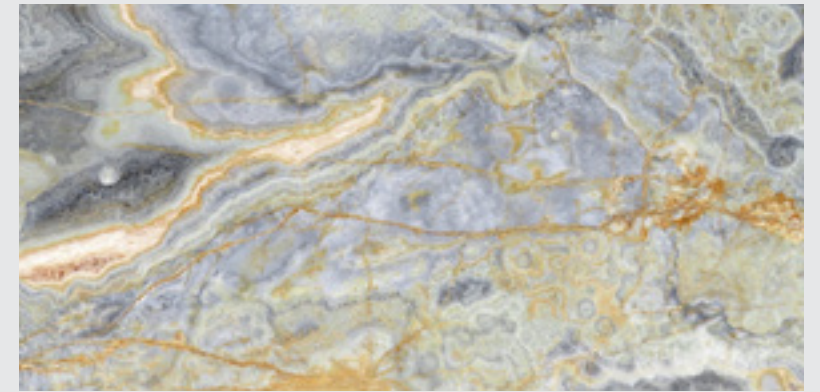
The calcite marble quarried in Brazil is both dramatic and refined with a rich tapestry of deep blue and violet tones interlaced with bold burgundy veins that are completed with subtle touches of golden earth.

POLARIS VERDE

Captures the glacial beauty with its cool composed palette and sweeping diagonal veins. Comes in soft shades of sage, icy grey, pale white miming the ancient glaciers.

TIGER PATAGONIA

Features as nature's abstract master piece with a dramatic canvas of molten golds, smoky browns, icy whites and ink black veins.



Customised TO BE EXCLUSIVE

A journey that began three decades back, in early 1992, as a sole distributor for 'Greenply' in South India and Goa, stewarded by **G Suri, Chairman and Founder, Twiggr**, the company has now grown to encompass a range of segments in the retail space. This retail transition incidentally happened in 2011 with the entry of its **Managing Partner Sundeep Suri**. However, the final transformation and christening as **Twiggr** occurred only in 2016 when Sundeep spotted the immense market opportunities to diversify the product and operations base.

It was almost a meteoric rise thence, the operations expanding to cover furniture, fabrics, besides its core products of ply and veneers. By 2020, the Experience Centre was opened to enable both the designer fraternity as well as the public to walk through the spaces and visually conceptualise the products in their spaces and connect with the in-house designers to customise their options.

UNIQUE, YET ACCESSIBLE

With the firm belief that design, personalised style should be accessible to all where budget does not serve as the deterrent, **Twiggr** focuses on conceptualising products that stand apart in their design while permitting for customisation, where it is all packaged and offered at affordable rates. "It is a misconception that customised options, designer intervention to provide a unique style comes at a price that is many times out of reach of common man", states Sundeep. "Designer collections, customised offerings are equally accessible to all who aspire without budget playing the dampener."

True to this belief and approach, **Twiggr** offers a range of products that lend themselves to heavy customisation as well as permit crafting a totally individually designed exclusive piece that serves as the pride of the designer and the user. Working with a team of craftsmen endowed with

a strong set of skillsets in producing a range of products, aided ably by the in-house team of furniture, product and fabric designers, **Twiggr** effortlessly puts in place a high level of customisation in its varied range of products.

Its readymade products also reveal a high level of design sense, each packing in an exclusive design and Indian craftsmanship where possible, dipping into the heritage roots brought to the fore by expert traditional craftsmen. Every item conceptualised displays a distinctive approach that can serve as a highlight in a space, be it a residence or a commercial zone. Incidentally, the cost of the readymade matches the customised options, subtly opening the door and inviting the user to partake in the design and the ultimate evolution of the product.

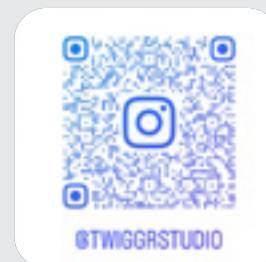
FACILITATING CUSTOMISATION

The design focus opted at **Twiggr** is chiefly Indian centric to meet lifestyle needs, cultural leanings, with an eye on the traditional artisan whose skills permit the crafting of pieces, be it a product or fabric, that stands tall in its design, intricate craftsmanship as well as materiality that is rooted to local sustainable leanings. Interpreting the strong heritage roots that the traditional craftsmen bring forth is the in-house design team that acts as the bridge between the designer or the user and the craftsman.

Besides facilitating in the design based on individual requirements, the design team also aids in the final finishing of a space where required, by styling the colours, the fabric used, adding value to the customised products offered to the client base. With Indian timber such as local teak, mahogany, pinewood, acacia being a preferred choice of hardwood used for its furniture, **Twiggr** also prides in offering furniture solutions that are not only unique and custom made, but also prove to be sturdy to last a lengthy period of time.



Styling by Ayawi Designs



Architecture Studio: Stapati Architects
Project: Krishnendu Ayurveda Hospitals



An expansive product range

The products on offer span a wide range, from furniture to fabrics, from plywood, veneer to multiple options in cladding material. Each segment of its product range permits customisation where the in-house design team facilitates the customisation or an external designer comes up with an entirely original design that is manufactured by Twiggr.

UPHOLSTERED SOLUTIONS

Twiggr comes with a range of solutions in upholstered seating, each carefully designed by its in-house team or conceptualised in sync with the requirements of designers who are looking to offer a unique solution in their interior projects.

For instance, the smooth grey leatherette upholstered three-seater sofa, a design solution from their in-house **Ayawi Designs**, comes with a striking blend of sleek lines and natural warmth. Its refined contemporary charm packs in a minimalistic structure accented by the integrated

wooden platform base that subtly extends beyond the cushions to balance form and function.

The sectional leather upholstered sofa, a customised solution offered based on the designs given by **Ar. Tangram**, serves as an attractive functional seating that is sleek in its form and rich in its colours and textures. The deep blue upholstered fabric with its textured weaves brings in both style and practicality for daily use. Its adjustable headrests add a layer of ergonomic comfort, making it the perfect solution to lounge in or entertain.

When the requirement for the space in their project **Audi Harleen** was for a lounge chair and a loveseat, the architect firm, **Studio NKPR** worked closely on the design with **Twiggr** to come up with two vibrant seating elements where both blend a differential playful form with plush comfort. The mustard yellow loveseat and the sky-blue lounge chair are upholstered in velvety fabric that is soft to touch and inviting to be seated. The rounded organic shapes of the



seating along with the low profiles exude a retro modern vibe. The seating, with the cushioned forms and curves, serve as a perfect solution for a creative nook, a stylish loft or cozy private relaxation corner.

With the request being sleek accent chairs for the project, **Hyatt Mumbai**, **Twiggr** came up with the customised upholstered solutions of warm rust-toned fabric and a refined grey fabric with black leather accents wrapping around the back and arms. Exuding refined comfort and elegance, the accent chairs are perfect to be placed in a cozy reading nook or in a stylish study or as an accent piece in a stylish contemporary living space.

STRUCTURED IN SOLID WOOD

Solid wood comes with its own charm that is unmatched, lending a classic taste even to the most straight-lined décor. **Twiggr** has a range of solutions on offer in solid wood furniture, be it seating, table accompaniments, cabinets.

The objective was to infuse traditional craftsmanship along with its cultural charm into the contemporary space. In keeping with this, architecture studio, **House of Ruya** came up with an elegant design for a wooden bench that interpreted the traditional flavours and craftsmanship to meet contemporary styles. What then ensued once **Twiggr** worked on this design was a classic piece that is perfect for a hallway, a foyer, or a cozy corner where it blends nostalgic warmth with artistic sophistication. The intricately carved panels and spindle style backrest reflect classic Indian

design influences, with the printed upholstered fabric reminiscing heritage art and craftsmanship.

A bar unit built with solid wood comes with its own unmatched charm, lending warmth as well as a rustic feel to the space, the overall ambience being earthy, grounded. When **Ar. Atto Atelier** had to design a bar for his **project Kaavu**, he decided to work with **Twiggr** to come up with a design that packed in warm earthy textures with a contemporary sleek look. The bar unit blends the rustic textures of stone with the warmth of wood, the under-shelf lighting and the hanging lights over the counter lending a strong contemporary feel. High solid wood bar stools complement the natural textures, creating a perfect environment for intimate gatherings and upscale lounging.

Project: Hyatt Mumbai



Architect: Tangram



Architecture Studio: House of Ruya



The design intent for the dining space in **Hyatt Bodh Gaya** was to come up with a space that exudes elegance and sophistication. With the dining area hosting a high ceiling, minimalist furniture in solid wood was opted by **Twiggr** to lend a sense of simplicity that is not overwhelming, yet elegant in its design and sophisticated in appeal.

The warm wooden accents of the furniture in the space combined with ambient lighting, achieves just that, offering a classic space to relax and savour the dining experience. Timeless craftsmanship combined with rustic elegance has a place of its own in a décor that many times proves to be stunning in its appeal. Architecture firm **Studio NKPR** worked on one such design with **Twiggr** for a console table

meant for its project **Audi Harleen**. Made from solid wood, the table reveals soft whitewashed tones that highlight the natural grains. This neutral finish incidentally blends harmoniously with a variety of décor styles, be it a coastal décor, a farmhouse, or an eclectic contemporary space.

METAL SPEAK

Metal comes with its own distinguished elegance, the sleek lines speaking a language of minimalism in a rustic ambience. The youthful, trendy look that metal furniture lends makes it an apt choice in contemporary themed spaces where the furniture is desired to tread lightly on the visuals. Metal furniture also serves as a much sought after

material when it comes to seating or dining in outdoor decks. **Twiggr** comes with a range of options in metal, be it sleek tables, trendy seating, or even metal infused upholstered seating elements.

The requirement for the **project Gypsy** was outdoor rooftop dining furniture. The metal dining set that was designed by **Twiggr** to meet this merges durability with a refined aesthetic. Minimalist cylindrical black metal mark the legs of the green stone topped table. Accompanying it are powder coated metal frame bar stools with woven synthetic rattan backs that introduce texture while lending a coastal breezy vibe. A neutral palette is introduced through the grey charcoal tones to complement the outdoor settings.

The **project Kaavu** of **Ar. Atto Atlier** required a sleek set of outdoor dining furniture that balanced modern minimalism with durability. In keeping with this design requirement, **Twiggr** came up with black powder coated metal frames that would be sturdy, yet lightweight, making them an ideal choice for an outdoor café. The chairs come with woven synthetic rope in neutral beige tones to lend a handcrafted feel to contrast the clean industrial lines of the metal frame. The furniture speaks comfort and practicality, blending in cheerful aesthetics.

In project **Audi Harleen**, **Studio NKPR** was looking for a lounge chair that would serve as a statement piece. **Twiggr** worked with Studio NKPR to come up a with a design that hosted a bold magenta velvet fabric, set against a matte

black metal frame. The result was an effortless blending of modern glam with industrial flair where the seating exudes luxury along with its vibrant pop of colour. Its circular form paired with a curved backrest creates an inviting silhouette to sit back and relax. The sculptural, yet functional design is aptly suited for contemporary interiors and boutique style settings.

Side tables look most elegant when they are minimalist in their design and material use. Capitalising on this, **Twiggr** has designed a range of sleek service tables and side tables in metal that display minimalist elegance with a contemporary edge. The service table designed with an open base, packs in plenty of visual interest with its slim elegant lines, permitting it to easily slide under a sofa or armchair, making it stylish, yet functional. The warm copper miming finish of the side table with hairpin style legs makes it a strong statement piece in the room.

STYLED WITH FABRIC

The rich textures and colours in a space invariably originate from the fabric used, be it in the upholstered seating, the window dressing, the cot and its headboard panelling, the rugs on the floor and much more. Recognising the crucial role played by fabric in determining as well as altering the ambience of a room, **Twiggr** offers the service of finishing an interior with the right choice and blend of fabric depending on the theme, the décor elements of the space.



Architecture Studio: Atto Atlier
Project: Kaavu Whitefeild



Architecture Studio: Studio NKPR
Project: Audi Harleen



In the **Krishnendu Ayurveda Hospitals** project, **Stapati Architects** wanted a refined earthy aesthetic in the space which would witness a fine blend of natural textures with mid-century modern design elements. **Twiggr** came up with an intentional clean styling of fabric that spoke of warm wood accents, soft ambient lighting behind the bed and a harmonious colour palette of taupe, olive and charcoal that effortlessly unify the room.

The brief was to create a modern eclectic style for the bedroom and **Twiggr** worked on a solution that had a mix of throw pillows in mustard, white and grey, complete with tassels, embroidery and fringe details. The overall effect of this styling by **Ayaw Designs** was one of playful contrast that came with a layered, curated look. While the styling leans strongly towards modern eclectic, accentuated by the presence of a mid-century inspired headboard in deep green velvet and further accented by walnut toned wood, the overall ambience of the bedroom is one of sophisticated charm created by the use of textured fabrics.

It was the conceptualisation of the living space with a rich blend of traditional elegance and vibrant charm. The space conceptualised by **NG Associates**, had **Twiggr** creating an upholstery that came with rich teal and turquoise tones, featuring intricate damask and floral patterns to infuse a regal, heritage aura to the solid wood furniture. The room brings together a Persian style rug, carved wooden furniture, curated décor elements such as brass planters and ceramic vases that combine to enhance the timeless elegance and cultural ambience.

The objective was to let the bedroom radiate contemporary elegance with a soft, luxurious touch. Architecture Practice, **Studio Camarada** worked on the design with **Twiggr** to bring in a finish of satin and cotton mix textiles for the pillows and lines to create a layered, tactile experience that is both refined and inviting. Balancing this are the textured Roman blinds combined with the minimal décor, lending a serene aura to the space where small accents like the velvet stool, gold detailing give a hint of glamour.



Architecture Studio: NG Associates

Veneered to astound

Twiggr comes with a range of options in the veneer category to panel the interiors based on the theme, the textures chosen, the language opted. Be it fluted panels, artistic renditions, innovative streak, furrowed statements, weathered finishes or natural wood revealed in its true grains, the range of natural wood veneers offered by **Twiggr** is expansive and impressive. The collection on offer spans an astonishing 1050 combinations in veneer, blending 50 captivating designs with 21 exquisite species of wood to craft a remarkable interior.

FLUTED PANELS

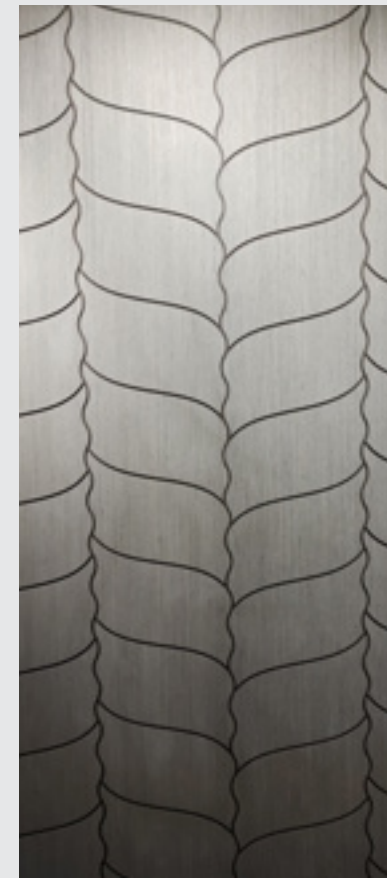
Combining the natural beauty of wood with the timeless appeal of flutes are the fluted panels of natural wood veneers. Packing in innovation, these panels also come with furrows to lend creativity to the space, where each serve as a visual masterpiece. Accentuating further the interior's appeal and featuring as an arresting highlight are the exotic solid wood panels with their fine detailing facilitated by CNC machines.

FLEXIBLE AND TIMELESS

The treatment of a dynamic space that flows to make a statement can pose a challenge if the veneer is not flexible in use. Recognising this constraint, the flexible panels on offer from **Twiggr** permit exploring endless design possibilities to turn the décor of an interior into a masterpiece statement.

A WEATHERED COLLECTION

Coming up with yet another unique collection, **Twiggr** offers a weathered option in veneers to lend that special character to furniture where it presents a distressed surface. The colour schemes on offer include the real old grey wood, the natural textures and colours presented in their original form to display over 15 different types of wood species. Equally available are customised choices to suit personal preferences and differentially designed spaces.



“The details are not
the details. They make
the design.”

CHARLES EAMES

Table of CONTENTS

ESTEEMED JURY	26
<hr/>	
RESIDENTIAL ARCHITECTURE	28
<ul style="list-style-type: none">Natural Materials & Greens Speak Minimalism <small>WINNER</small>An Experiential Language Of Light & Natural TonesSuffused In GreensA Canopied Residence	
<hr/>	
RESIDENTIAL INTERIORS	46
<ul style="list-style-type: none">Rustic Tones Lush Greens Accent An Industrial Design <small>WINNER</small>Craft Intensive Yet Contemporary	
<hr/>	
RETAIL INTERIORS	56
<ul style="list-style-type: none">Minimalist To Enhance <small>WINNER</small>Green, Flexible, VersatileA Dynamic Narrative Of Art And Colour	
<hr/>	
HOSPITALITY & LEISURE INTERIORS	70
<ul style="list-style-type: none">Minimalism Heightening SophisticationHarmonious Fusion Of Art & Colour	
<hr/>	
INSTITUTIONS ARCHITECTURE / INTERIORS	80
<ul style="list-style-type: none">Contemporary With A Classical Grandeur <small>WINNER</small>A Dynamic Program To StimulatePsychology Of Safety Through Materiality	
<hr/>	
OFFICE SPACE INTERIORS	94
<ul style="list-style-type: none">Vibrant And Futuristic <small>WINNER</small>Treading Lightly With An Open Plan	
<hr/>	
YOUNG PRACTICES	104
<ul style="list-style-type: none">Earthy Palette, Textural Delights Echo The Spicy Cuisine <small>WINNER</small>A Language Of Wood, Concrete & Greens	



ARCHITECT CHITRA VISHWANATH, BIOME ENVIRONMENTAL SOLUTIONS

After completing her studies at the School of Architecture CEPT India in 1990, Architect Chitra Vishwanath started Biome Environmental Solutions in Bengaluru which currently hosts a diverse team of 30 professionals actively engaged in the realm of ecological architecture, innovative water and waste solutions.

Chitra has been extensively involved and participating in design workshops and education. The design workshop at Archiprix 2017 in CEPT Ahmedabad was organised by her. She held the Charles Correa Academic Chair at Goa College of Architecture in 2018. Since 2019, she is Design Mentor at NITTE Mangalore. She led the Monsoon Semester at the School of Architecture CEPT Ahmedabad in both 2020 and 2021. Currently she is Advisor and Final Year Reviewer for MIT Jaipur.

She was the Juror at the 2A Continental Architectural Awards in Madrid 2019. She participated as judge at the Asia Edition of YTAA 2020, conducted by Fundacio Mies Van Der Rohe Barcelona and was the judge at the D&AD and Dezeen awards.



ARCHITECT MILIND L. NULKAR, CENTRE FOR DESIGN EXCELLENCE

Architect Milind Nulkar holds a Diploma in Architecture from Academy of Architecture, Mumbai, a Diploma in Climate & Design of Building under University College, London and Master of Urban & Rural Planning from University of Roorkee, (now IIT Roorkee). He was faculty member and research associate at the School of Development Planning, a unit of Centre for Development Studies & Activities under the University of Pune.

He has been involved as a consultant on various Architectural, Interior Design & Planning assignments in various capacities across India and overseas. He has worked as a consultant to various State Governments in the country on Development Planning Projects for Backward and Underserved Areas with special focus on Area Development Program. He has presented multiple technical papers on Planning and Area Development Programs for less developed countries. Presently he serves as the Managing Director of Centre for Design Excellence, a professional consultancy organisation based in Bengaluru, focused on Pan India Design of Hospitality Projects and Large format Retail & Commercial spaces.



ARCHITECT NISHA MATHEW GHOSH, MATHEW AND GHOSH ARCHITECTS

Nisha Mathew Ghosh is an architect, multi-medium art practitioner and independent researcher-Curator. She was selected to be the Curator for the India Pavilion at the London Design Biennale 2021 and presented the showcase 'Small is Beautiful – a Billion Stories'. In 2022, Nisha was selected for a curatorial EPIC fellow AAMC program in NY.

Nisha comes with a strong leaning towards community and urban empowerment in her works initiated through the Mathew and Ghosh SustainableCreationCare Foundation and other collaborations. Her works were showcased at the Venice Biennale Space Time Existence

exhibition and in the Wallpaper Design show. She has won multiple awards for her architecture works executed with Partner Soumitro Ghosh, Co-founder of Mathew and Ghosh Architects, besides her multiple artworks. Notable among her artworks is in woven wire and textiles showcased at the Kochi Biennale Foundation's large format show, 'Lokame Tharavad' / 'The world is one family' in 2021-2022.



ARCHITECT SANJAY MOHE, MINDSPACE ARCHITECTS

Architect Sanjay Mohe is the Founding Partner of Mindspace Architects, established in 2004. Before establishing Mindspace, Mohe had a working association of 21 years with Chandavarkar and Thacker, prior to which he had a short stint at the office of the renowned architect, Charles Correa. An alumnus of JJ College of Architecture, Mohe has brought home multiple awards and recognitions for his architectural works that span institutions, residences, housing, research labs, memorials, libraries, hospices, factories, beach resorts and much more.

Some of his notable awards include JK Great Master's Award, for Lifetime Achievement 2019, Golden Architect Award by A+D & Spectrum Foundation, A+D & Spectrum Foundation Architecture Award won 3 times, JK Cement Architect of the Year award won 8 times, ar+d – International Annual Award of Architectural Review London, Gold Medal from ARCASIA – (the Asian Forum for Institutes of Architecture). Mohe is an oft present face at architectural forums, talks and juries.



ARCHITECT DIMPLE MITTAL, MAYAPRAXIS

Architect Dimple Mittal founded mayaPRAXIS along with her partner Architect Vijay Narnapatti in 2001. She and her partner have brought home multiple awards and recognition for their architectural work, notable of which include, Architect of the Year 2011 for public building [21st AYA awards, JK Cement], and others from A+D, Inside Outside, Architect of the Year Foundation [JK Cements], and Indian Institute of Interior Design. mayaPRAXIS was featured as one of the "Practices of Consequence" by the Indian Architect and Builder and as one of the "Emerging Practices of India" by Arch Daily and one of the "Hot 100 Architects of India" by Architecture and Interiors India Magazine.

Dimple has a Bachelor's degree in Architecture from SPA New Delhi and a Master's degree in History and Theory of architecture from the School of Design Architecture Art and Planning at the University of Cincinnati, Ohio. Her works lean towards sustainable solutions in the building process, exploring the materiality and the manner in which varied materials come together in a space.

Residential
Architecture
Residential
Architecture

“A house is not a machine to live in. It is the shell of man—his extension, his release, his spiritual emanation.”
- Louis Kahn

NATURAL MATERIALS & GREENS SPEAK MINIMALISM

RESIDENTIAL ARCHITECTURE

AWARD
WINNER

CATEGORY
RESIDENTIAL ARCHITECTURE

PROJECT NAME
MAYA
PLACE
BENGALURU

FIRM
KAMAT & ROZARIO

DESIGN TEAM
ARCHITECT LESTER ROZARIO

JURY COMMENT

When the 5 elements are integrated through natural materials design finds a universal language.

It was to be a residence for a couple and their two canines, the brief requiring a large garden that would permeate the living spaces, celebrating the bond between humans and pets. The ensuing design dedicated half the site to an expansive garden, catering amply to the needs of the canines, with the remainder housing the structure for the family. The design balances deftly the private and shared spaces to ensure the functional requirements of the interiors is adequately met even as the public spaces feature as large and welcoming.

Going against the conventional layout of a residence, the structure dedicates the ground floor exclusively for the living area, the library along with the master suite, where all the spaces open on to and seamlessly integrate the large exterior landscape. The ground floor thus becomes a shared sanctuary for the inmates including the pets, the free flowing spaces connecting effortlessly with the exterior greens.

Since the canines are an integral part of the household, based on their activities and needs, the kitchen and the dining are shifted to the first floor, thus leaving the ground floor open to interpretation and public in language that permits unrestricted space to the dogs to explore or just be. The living area features as a double height space into which the kitchen and dining spaces at the first level overlook.

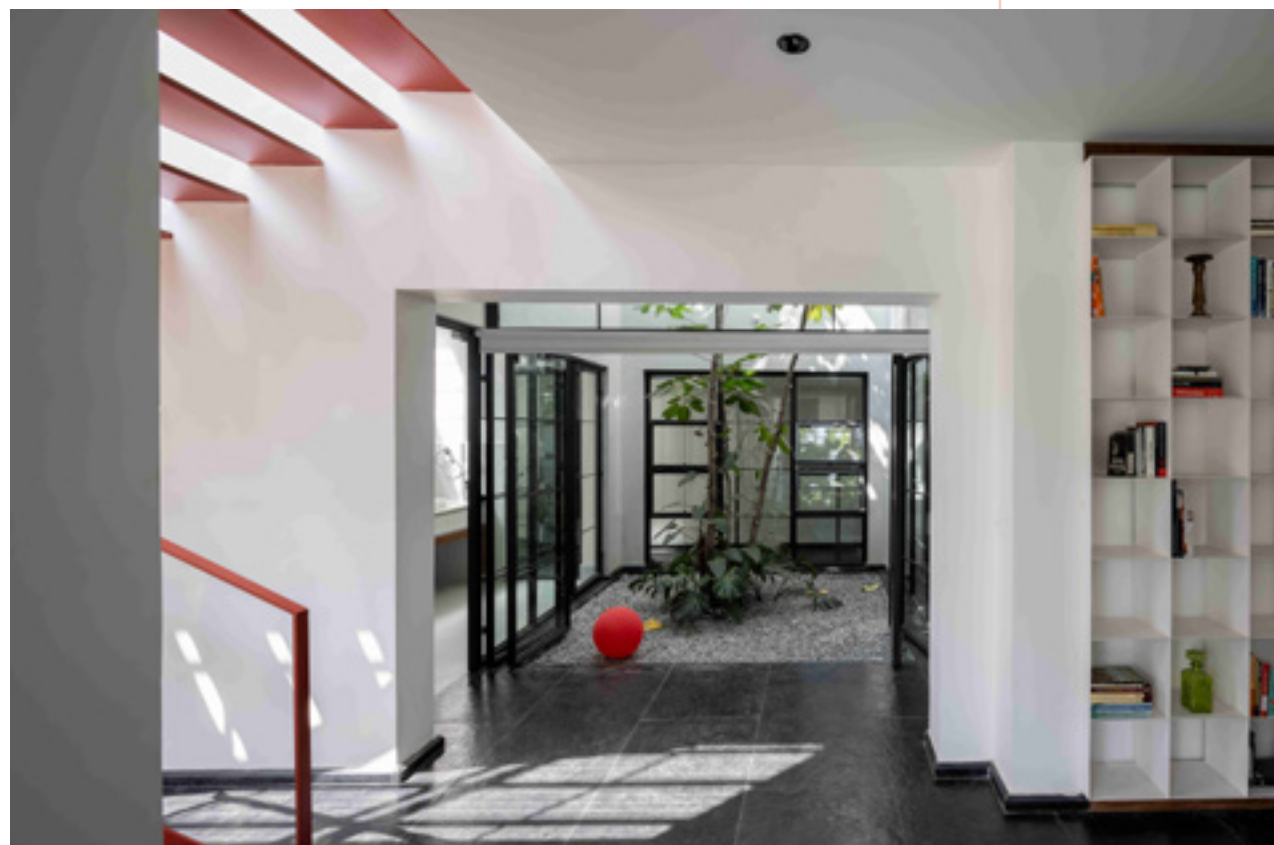
A green sunlit internal courtyard features at the ground level, into which the living spaces open up and merge into. The presence of the courtyard enhances the open outdoor feel of the master suite, given that the main bedroom, the bathroom as well as the walk-in wardrobe wrap around this internal courtyard.

The extensive use of glass in the form of stackable shutters or walls, again opens up the interiors visually to encompass the greens. This along with the presence of double height in the volume lends the visual feel of the spaces being massive. The palette is deliberately kept rustic, warm and subtle with a combination of exposed concrete, wood, glass, Kota stone flooring and strategic walls painted a pristine white.





This material palette and the natural tones are well complemented by the locally sourced Sadarahalli stone featuring on the exteriors. The façade of these stones is a response to the major part of the site having a South orientation. The presence of the Sadarahalli fins in the façade permit the inflow of reflected dappled light into interiors, where the glare is cut out sizeably by their fins. To maintain uniformity, the rest of the façade continues the same design language.



AN EXPERIENTIAL LANGUAGE OF LIGHT & NATURAL TONES

RESIDENTIAL
ARCHITECTURE

AWARD
RUNNER UP

CATEGORY
RESIDENTIAL ARCHITECTURE

PROJECT NAME
S-HOUSE

PLACE
BENGALURU

FIRM
PARALLAX ARCHITECTS

DESIGN TEAM
ARCHITECTS NAGENDRA RAMACHANDRA
AND RAGHUNANDAN GURURAJ

When Parallax Architects were approached to build a residence on a 60x20 linear site in an urban neighbourhood, the first thought that emerged was the general profiling that any residence fits into, characterised by the predictable expectations and requirements. The reaction then was to break free from this conventional approach and revisit the concept of a residence, move away from the fixated spatial arrangements that expects the entry to be marked by a public space to entertain guests. The idea which then came up was to approach in a different light and more so, articulate the design language with light per se.

The design concept then emerged, focusing on the dynamic play of light and shadow by orienting the spaces and opening up strategically the interiors to let the light filter in and alter the moods as the day progresses. What then ensued was an interchange of the functions of the ground floor and first floor, employing spatial simplicity through organisational complexity.

Thus, the living room, dining area and kitchen, essentially the public spaces, were shifted to the first level while the private spaces of the bedrooms were placed at ground level. Besides breaking away from the conventional approach,

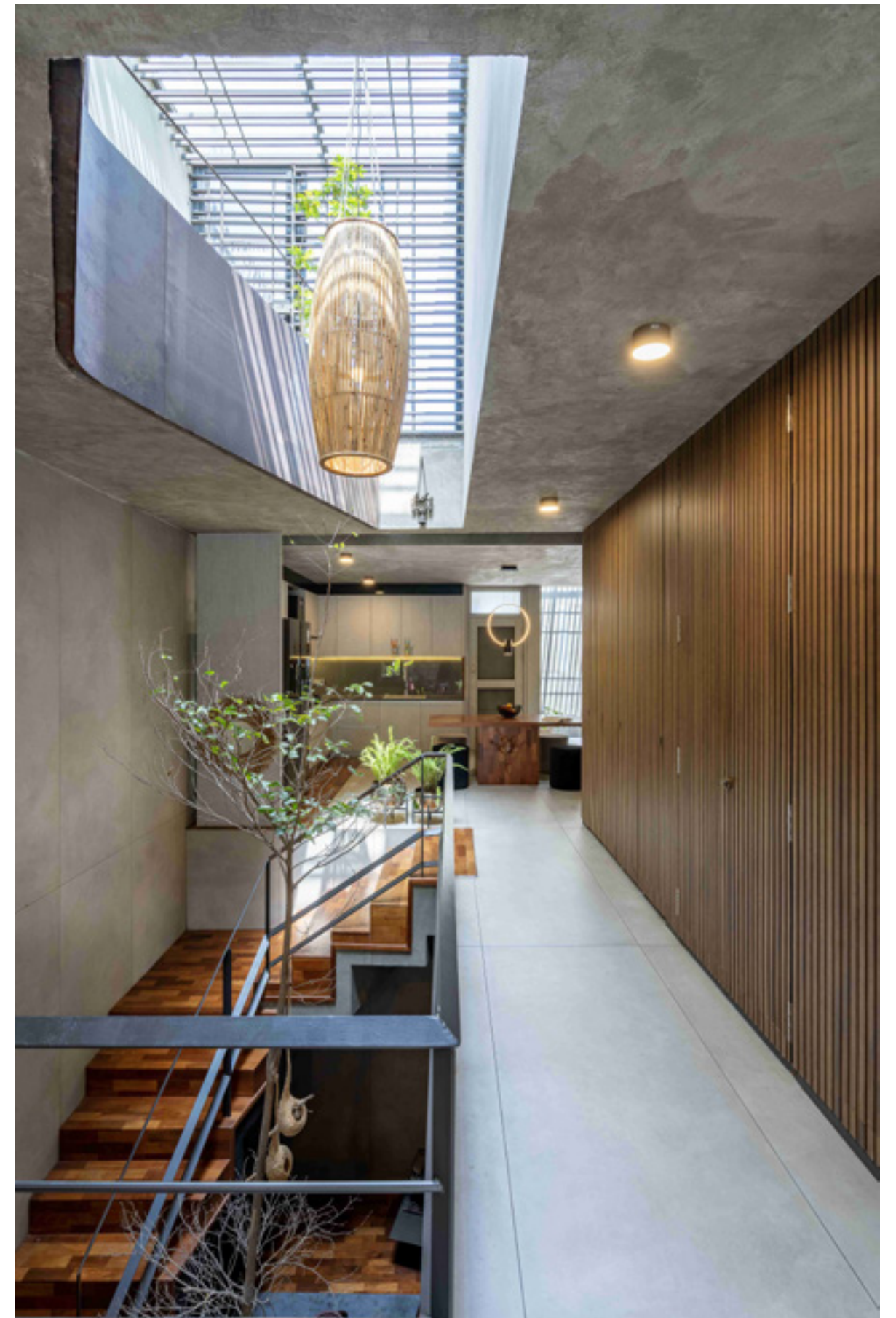
this switch permits the play of light into the interiors in the public spaces because of the elevated level while the private zones are tucked away and cosy.

The structure is articulated by a Corten steel and exposed concrete façade, with grooves and windows lined with MS. A skylit internal courtyard with lush greens connects through the levels where the spaces at each level spills out to let in the dynamic play of light and shadow.

The metal fabrication, besides permitting unhindered flow of natural light and ventilation, also brings in a patterned play of light that continuously alters through the day along with the sun path.

Along with the use of the age-old concept of light and shadow play to articulate the experiential language of the interiors, the design also teams up with grey monotones and wood textures to compliment the natural feel of the spaces.

The fine balance between the horizontal and vertical spatial statements is thus deftly enhanced by the altering play of light and shadows, combined with the strong presence of greens, where the grey monotones and warm wood textures serve as a neutral canvas to highlight this picture.





JURY COMMENT
*When Shadow is used to bring
 in light, it's a Spiritual experience
 of space*



IN GREENS

AWARD

SECOND RUNNER UP

CATEGORY

RESIDENTIAL ARCHITECTURE

PROJECT NAME

HOUSE OF GREENS

PLACE

BENGALURU

FIRM

4SITE ARCHITECTS

DESIGN TEAM

ARCHITECT CHANDRAKANT S KANTHIGAVI

*I*t was a residence built in the midst of a dense urban neighbourhood for a family strongly inclined towards nature and sustainable living. Not surprisingly the brief was to have a structure that was cloaked in greens, the design leanings directed towards sustainability. Capitalising on the surrounding dense trees, the design that ensued was one which permitted every section of the residence to connect with the abounding greens either visually or physically. The greenery thus finds its presence in both public and private spaces, including the bathrooms.

The four-bedroom house comes with free-flowing spaces, the demarcating walls prevailing only in the private spaces to segregate. The expansive glass walls ensure the visual connect to the garden remains intact even when physical segregation is brought in. The rich presence of greenery is complemented by a combination of the rustic and warm earthy tones of wood, exposed concrete, laterite stone, Kashmir White granite which find their presence in the interiors and structure.

Given the South facing site, deep overhangs have been brought in to shade the interiors from heating rays. The ground level accommodates the living, dining and kitchen, the entire space free flowing with the functional zones demarcated purely by the décor in the respective segments. The living space comes with a double height ceiling, permitting a visual connect to the family space and study area at the first level.

Given the open plan, copious natural light filters into the spaces, with passive cooling in place through the row of vertical hot air vents with a mesh featuring on the eastern wall. Laterite stone cladding on these vertical vents infuses warm earthy tones, combining with the greens that connect visually through the glass walls. A sculptural staircase with timber treads becomes an artistic highlight in the minimalist interiors where the chief artefact is the abounding greens.

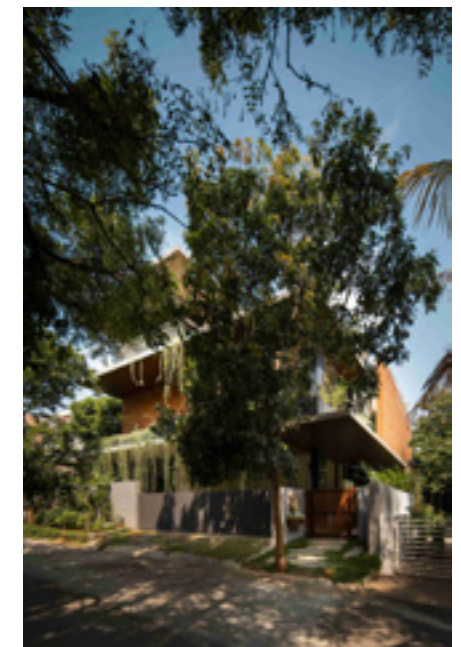
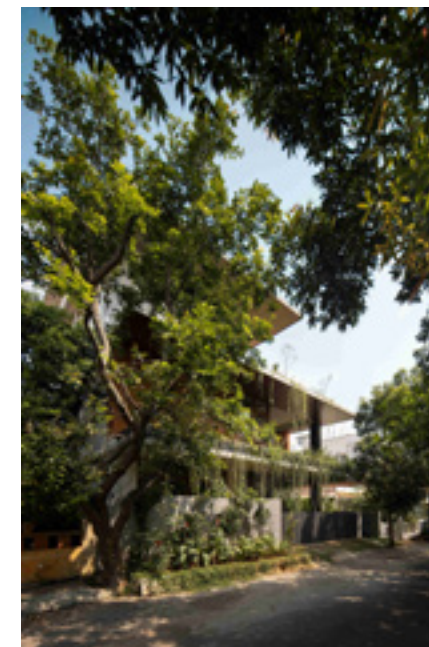
Resonating with the ample presence of greens at the ground level, the master bedroom on level one comes with a similar green presence where a large step out patio houses a lush terrace garden. The interiors of the bedroom seamlessly envelopes this greenery, the ensuing décor lending the feel of being at ground level rather than on the first floor. The second level of the residence housing the guest bedroom and a gym, has its equal share of thick greens in the form of a large terrace garden. The dense greenery at every level gives the feel of being on the ground floor even when seated on level one or two.

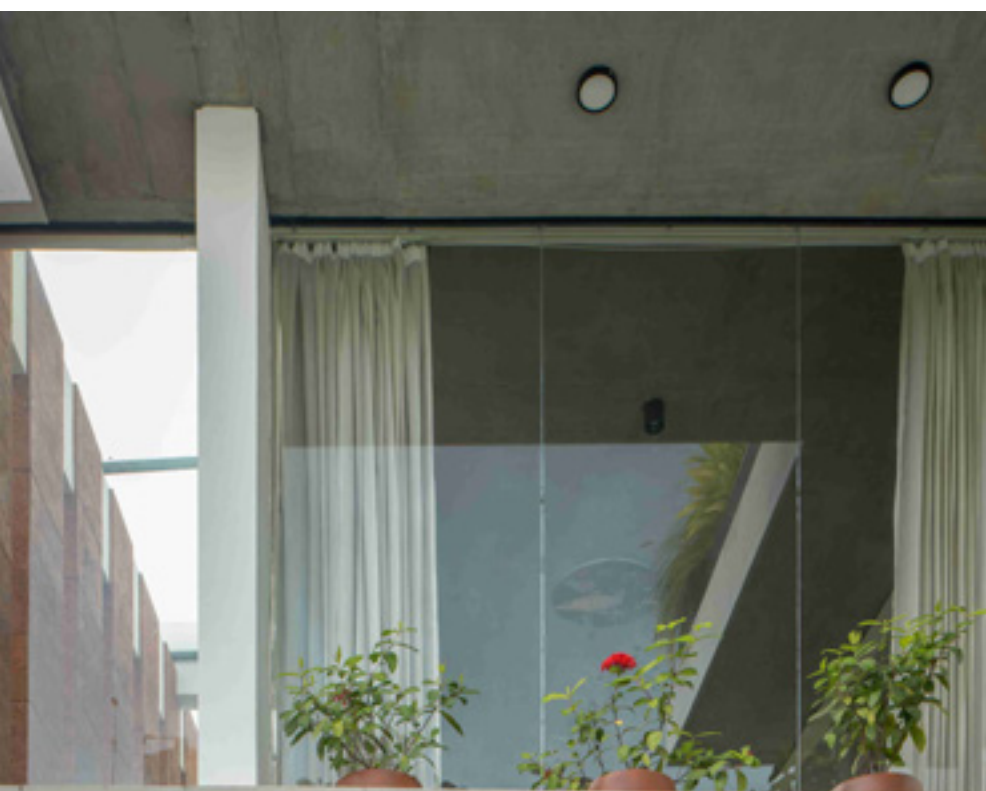
With passive cooling in place, ambient temperature remains comfortable with the continuous flow of natural ventilation, enabling the residence to dispense with air-conditioning. The interiors are naturally lit, with ample natural light filtering in, meeting fully the strong sustainable leanings of the inhabitants.



JURY COMMENT

When the building stands up for nature, there is hope for our planet





A CANOPIED RESIDENCE

RESIDENTIAL ARCHITECTURE

AWARD

SECOND RUNNER UP

CATEGORY

RESIDENTIAL ARCHITECTURE

PROJECT NAME

HOUSE OF CANOPIES

PLACE

BENGALURU

FIRM

STUDIO MOTELY

DESIGN TEAM

ARCHITECT ANAND R KURUDI

The residence was to come up on a linear site situated in a quiet residential area. The brief was for a residence that would be encompassed in greens to lend the experience of outdoors while being indoors. This meant that the house would open up to a generous garden court to soak in a thickset of greens, where the seamless outdoor connect would permit large gatherings for entertainment.

The design features as three wings, each housing a distinct function. The front section features a semi-covered party zone while the private spaces are tucked away at the back. Between these front and back wings are contained the living area, the dining and staircase, essentially forming the heart of the residence.

A concrete roof cantilevers three meters on to the garden area, capping a double height living space. A lush green courtyard connects to this double height space through a series of timber sliding doors that span almost fifty feet in height. This exposed concrete roof is propped delicately between a Vierendeel frame on one side and two sets of slender steel double columns along the opposite edge. To counter the heaviness of the concrete, a series of horizontal

slits prevail beneath the roof, simultaneously aiding to bring in diffused light quality into the interiors.

A study area features on the first level, floating over the dining space, offering a cheerful view of the garden from the large patio. The patio comes with a dramatic canopy in mild steel which incidentally is concealed within the cement sheets that mime the shuttering layout of the mother canopy above. Though the residence comes with expansive openings, these are amply shaded, with the strategically placed horizontal slits serving as hot air vents, keeping the interiors naturally cool.

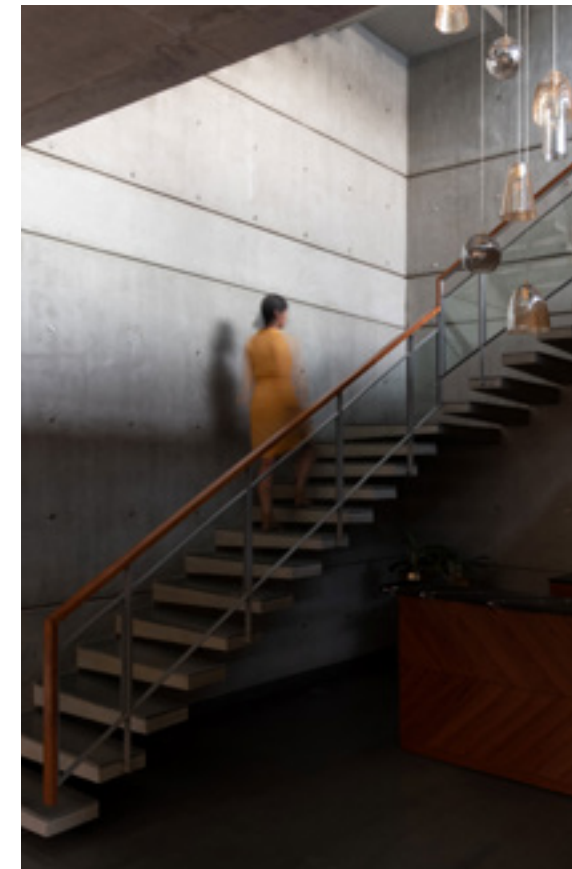
The objective of infusing the layers of canopies on the structure was to provide the much needed shading for the west facing façade, besides creating a dramatic elevation. While the structure is articulated by the dramatic canopies of exposed concrete and an expanse of glass to usher in a seamless connect to the outdoors, the residence speaks a language of restrained material palette comprising of exposed concrete, polished Kota stone and teak wood. The highlight of spaces thus becomes the ample natural light seeping in and the copious greens filtering in, both taking centre stage.





JURY COMMENT

*When design whispers
Nature is not a place to
visit , it is your home*



Residential *Interiors* *Residential* Interiors

*“The home should be the
treasure chest of living.”
- Le Corbusier*

RUSTIC *TONES* LUSH GREENS ACCENT *an INDUSTRIAL DESIGN*

RESIDENTIAL INTERIORS

AWARD

WINNER

CATEGORY

RESIDENTIAL INTERIORS

PROJECT NAME

THE RUNWAY HOUSE

PLACE

BENGALURU

FIRM

BALAN AND NAMBISAN ARCHITECTS

DESIGN TEAM

ARCHITECT ARJUN U NAMBISAN

The residence is a penthouse in a residential complex situated close to an aerospace, the vantage placement affording spectacular views of aircraft taking off and landing on the neighbourhood airfield. Tucked away into a quiet bylane of the neighbourhood, the penthouse offered a serene space to relax, ponder, destress. The design executed, not surprisingly emerged from this backdrop, the interiors exhibiting strongly a fine blend of rustic tones, accented with lush greens to meet the contemporary inclinations sought in the décor.

The interiors were to meet the needs of a growing family comprising of a young couple and their toddler twins, accommodating simultaneously the penchant to entertain often. Architect Arjun Nambisan of Balan & Nambisan Architects came up with a modern industrial design that packs in plenty of surprises around every corner of the residence, all the way into the bathrooms.

The residence is split into two parts of functional regions with services and practical needs of day-to-day household, tucked away ingeniously behind multiple pocket doors. One segment of the residence thus hosts the entertainment zone which comes with a media lounge, a convertible guest bed to conserve space as well as meet multiple functionalities. An indoor and outdoor bar prevails in this section to meet the entertainment needs.

The second wing of the residence houses a dramatic double height family area along with a dining and kitchen. The upper deck accommodating the bedrooms, opens on to this space, bringing in vertical visual connectivity. The double height volume is punctuated with chunky steel beams, infusing a rustic, industrial flavour to the décor. Cutting into the expanse, the beams sweep down to embrace the human scale, breaking the visual expanse of the volume to lend a comforting cozy impression.

An abounding presence of greens can be both soothing as well as energy uplifting. Sensitive to this, a lush green patio opens on from the living area, where a Jacuzzi prevails surrounded by thick foliage, serving as an oasis amidst a concrete jungle. The individual bedrooms feature as self-sufficient units to meet the functional needs of the respective users. Thus, the children's room is designed to include a play area with storage for the toys besides the sleeping section and wardrobe.

The master bedroom comes with a glamorous walk-in wardrobe along with a dresser to meet the exclusive needs of the lady of the house. Along with this thoughtful section is a moody manly statement of jet-black rock-cut skylit shower to meet the varied expectations of the gentleman. In keeping with the intent to lend an industrial, rustic flavour to the interiors, the structural elements are left raw, like an



exoskeleton where the corrugated decks are painted a cold grey, complementing the dark rafters, steel beams and exposed tracks. Contrasting this design feature are a cluster of delicate handmade metal discs, marking traditional craftsmanship reimagined to suit contemporary leanings, that light up the double height space.

The fusion of the elements successfully brings in an energetic vibe that is warm, yet industrial to make a unique statement, striking a fine balance between industrial rawness and modern luxury.

JURY COMMENT
When Space speaks Volumes & Material palette creates desired magic it's truly home coming



CRAFT YET CONTEMPORARY

INTENSIVE

RESIDENTIAL INTERIORS

AWARD

RUNNER UP

CATEGORY

RESIDENTIAL INTERIORS

PROJECT NAME

HOME SET IN STONE

PLACE

BENGALURU

FIRM

STUDIO MOTLEY

DESIGN TEAM

ADHITI S GAUTAMA

The site was a typical suburban apartment, the interiors sought to be different from the ubiquitous modern spaces that pack in modular furnishings. Yet, the requirements evinced leaned towards a space that was contemporary and relevant to modern lifestyles. The design thence opted was one that saw extensive use of natural materials in the form of handmade items and craft intensive interventions to create a unique sophisticated space that came with a rich layer of the traditional, yet conceptualised in a contemporary theme.

The common area or the public space housing the living, dining and the foyer has the puja area as the central focal point, coming up at the intersection of the three spaces. Enclosed with partitions of teak wood verticals with fluted glass and rattan infill, the puja area features as an important component of the household. The partitions enclosing the puja area extend further to create an enclosure which houses the library and study area. The partitions are deliberately made moveable so as to permit the living area to be extended into a larger space if requirement entailed.

With the objective of bringing in unique, crafted solutions into the décor, an insitu terrazzo flooring marks the foyer, living, dining spaces, with a delicate strip of marble marking the end dimensions. The eye-catching terrazzo flooring

also serves as a functional demarcating element in the free-flowing spaces, defining the dining area, the living room. Conceived as a tribute to Carlo Scarpa, the flooring is detailed with brass accents which respond to both function and furniture. The flooring not only ties the spaces together but differentiates by creating unique identities in the form of colour and texture.

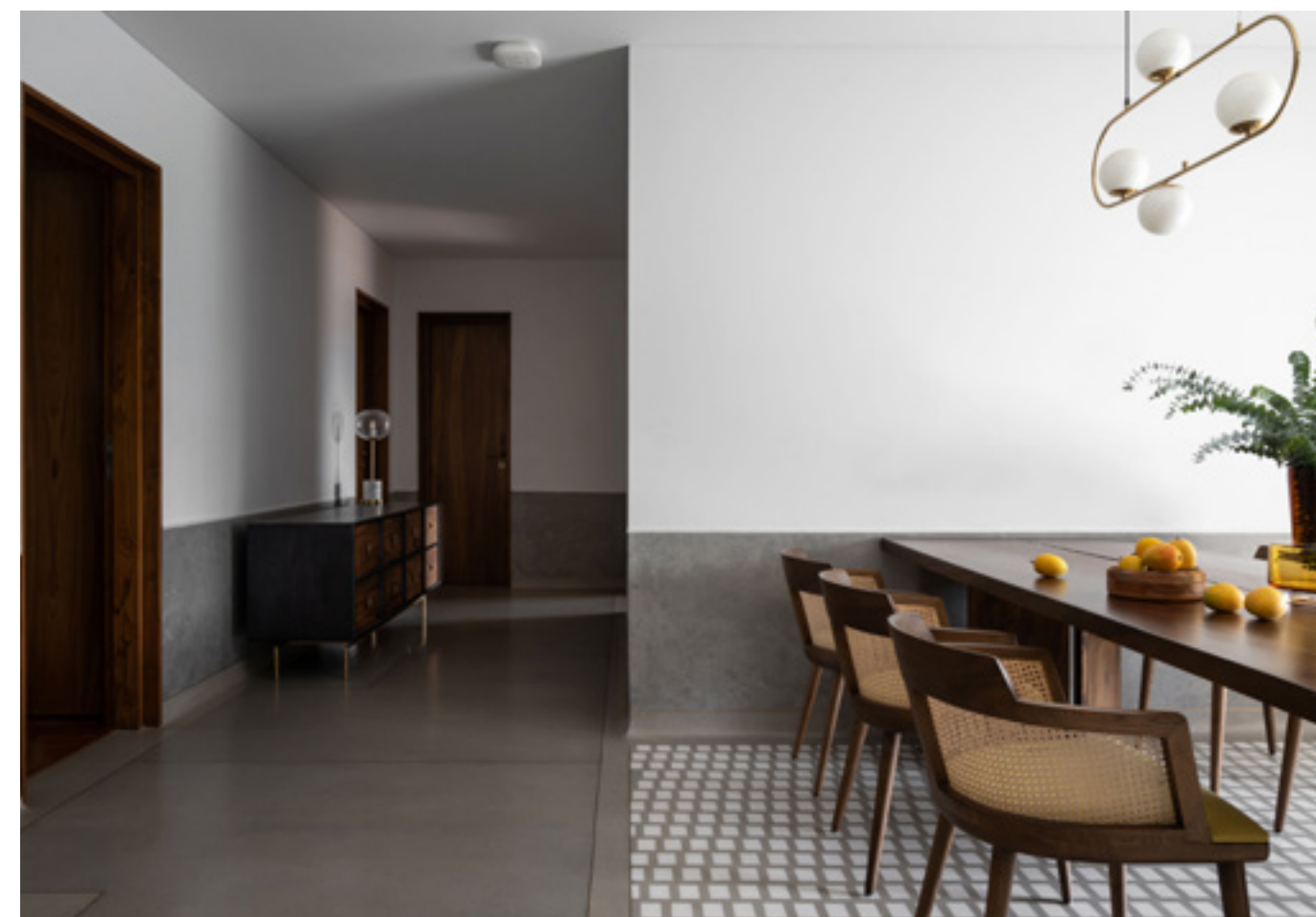
The private spaces are articulated with warm wood flooring, complemented by fabric layered wardrobes and headboard to usher in an added layer of warmth and texture. The language of the handmade is extended to the bathrooms where use of tiles is minimised by opting for pigmented oxide finishes and insitu terrazzo bathtubs and washbasins. The kid's bedroom comes with a play area and study space besides the resting zone that features over the play area. Staggered steps clad in teak wood lead up to the bed, with additional storage tucked into it.

Given the strong leaning towards handmade items, a high level of detailing went into the design of the furniture and the spaces, calling for precision execution. The engagement of experienced craftsmen to execute the designs as conceptualised, ensured the interiors evolved as a true amalgamation of traditional crafts interpreted into a modern living space.



JURY COMMENT

When you know where to draw the line to keep it sleek & simple



Retail

Interiors

Retail

Interiors

*“Architecture is a narrative.
It’s about creating identity.”
- David Adjaye*

MINIMALIST TO ENHANCE

RETAIL INTERIORS

AWARD

WINNER

CATEGORY

RETAIL INTERIORS

PROJECT NAME

PRISM LIGHTS

PLACE

BENGALURU

FIRM

STUDIO RUH

DESIGN TEAM

KAVYA SHETH, AR. SHRUTHY SANGHVI

The design to be executed was for a retail space that was to market exclusive light fittings. When Interior Designer Kavya Sheth and Architect Shruthy Sanghvi of Studio Ruh were approached by Prism Lights for creating an experiential space for their light fixtures in an existing two decades old building, their reaction was to come up with a concept that spoke of warm minimalism that blended an understated elegance. The idea was to ensure the bespoke light collection on display was done against a backdrop of uncluttered volumes, where the wares become the chief focus.

They began with a décor that was simple in its layout, where the peach colour enveloping the walls and flooring lends a consistent visual experience that does not overwhelm the items on display. The monotone textured finish of the walls further creates a sinuous movement through the spaces, visually softening the corners. Bringing in a striking contrast to these pastel tones are handcrafted matte black natural wood tables that dot the spaces, prompting the customer to stop, linger, absorb the items on display.

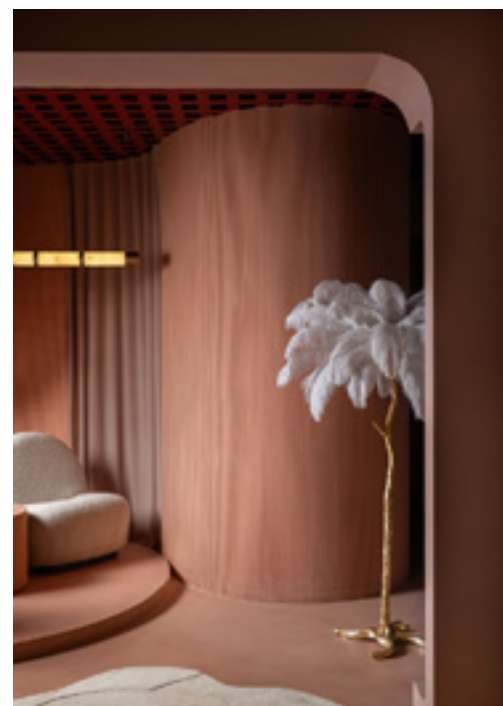
Complementing these visual points of contemplation are comfortable seating segments hosting plush armchairs, inviting the customer to pause and reflect on the choices. The entire conceptualisation is directed towards enabling the customer to browse through at leisure without the décor rushing or overwhelming the experience. While the

ambience created is totally modern, the décor is executed using natural materials and subtle colours where the light fixtures become the key elements of highlight.

The display zones are also meticulously planned to direct the attention on to specific items on exhibit. For instance, the sleek adjustable light fixtures hanging from the ceiling are positioned to specifically direct the focus on to the select areas of presentation. They are intentionally kept unobtrusive whereby they serve to enhance rather than overshadow the items exhibited. Facilitating unhindered visual focus and experience of the items presented also called for discreet cable management systems that would ensure streamlined aesthetics, minimising visual distraction.

While the display and ambience can be immersive to aid in pausing before exercising the choice, no experience can match an interactive session where the customer is able to preview how different lights feature in different settings. Facilitating this interactive session is the inclusion of cutting-edge technology to enable the customer to visually experience the spaces using multiple iterations of the light fittings on offer. The inclusion of this innovative display into the warm minimalism of the spaces, further enhances the retail experience, meeting the key expectations of the retail space functioning as a flagship showroom.





JURY COMMENT

*When product throws
light on the spatial
experience design
ideas shine through*



GREEN, FLEXIBLE, VERSATILE

RETAIL INTERIORS

AWARD

RUNNER UP

CATEGORY

RETAIL INTERIORS

PROJECT NAME

MISTRY ARCHITECTS

PLACE

BENGALURU

FIRM

MISTRY ARCHITECTS

DESIGN TEAM

AR. SHARUKH MISTRY, AR. SANDEEP UMAPATHY

The requirement was to craft an outdoor furniture store, where the site was adjacent to the factory manufacturing the furniture. The site came with 21 coconut trees that sat almost at its heart, prompting a design approach that would need to weave around so as to preserve these trees. The space envisioned was not surprisingly, unconventional where the design was in harmony with nature, meandering through the existing set of coconut trees. An organic path then ensued, weaving around each tree, creating distinct pavilions to display the furniture.

The roof of these pavilions is structured to echo the forms of the coconut tree leaves. The entire structure is conceptualised to tread lightly, the footprint blending in with the existing trees. The entrance gate, drawing inspiration from the details of a coconut tree bark, displays distinctive lines of the bark where the patterns are etched into the wood. The entrance gate dramatically opens on to a charming outdoor space that enhances and celebrates the joy of outdoor living, a tranquil lily pond with vibrant koi fish accentuating this soothing ambience.

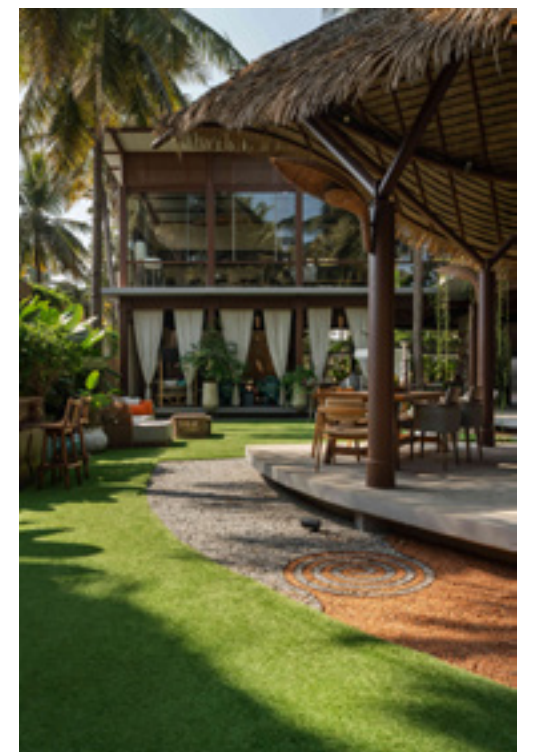
A backdrop of tropical landscape, local stone, lime plastered walls teamed with muted grey cement flooring further enhances this outdoor experience, serving as a vibrant canvas against which the outdoor furniture is displayed. Two leaf-shaped pavilions emerge to blend into this verdant landscape, guiding the visitor to explore through

the displays. The pavilions are inspired by the leaves of the abounding coconut trees, their intricate skeletal form mimed artfully through steel fabrication.

The parametric roof profile is covered with a layer of synthetic thatch, blending the contemporary design with the natural materials of stone, gravel, wood and lime plaster. The steel structure brings in the strength and durability while the synthetic thatch exudes a rustic charm, integrating the pavilions into the landscape. In the indoor section of the retail space, the ceiling features a jute weave which is expertly woven to create an artistic interplay overhead.

The intentionally designed open, fluid spaces, accentuate the furniture on display against this green backdrop, while a two-storeyed steel structure at the rear seamlessly integrates into this ground level feature. A light metal staircase with wooden treads leads to this upper level which not only facilitates furniture display but also serves as a hosting area for talks and events. An uninterrupted view of the entire landscape is offered from the first level, connecting to the store's design and its natural surroundings, creating a unique, immersive experience.

A lean-to roof features on the first floor where large-span girders are softened by a curved profile. An open north facing roof ushers in ample daylight, with the pivoted panels ensuring cross ventilation. Perforated sheets also feature above the glass panels to permit a gentle flow of air through



the space. The flooring across the project features as a muted shade of grey cement with leaf imprints, the walls finished with a uniform beige lime plaster. Two accent walls clad in local granite, complement the lime plastered surfaces.

The material palette and textures of the store is kept simple, earthy to enable the landscape to serve as the main backdrop for the furniture displayed. A range of sliding panels facilitate a dynamic display of the furniture and spatial configuration. By moving the panels, the space transitions to accommodate different themes and settings or also create intimate themed environments, thus increasing the functionality and visual appeal of the spaces.

The dynamic nature of the spaces also serves to host events, exhibits, permitting an ever-changing environment that packs in plenty of surprise and curiosity.

The light fixtures reveal a wealth of craftsmanship where a variety of weaving methods in cane, rattan and jute have been integrated, as a reflection of the two decades of exquisite furniture crafting by the retailer. Thus, clusters of bob lights presenting different varieties of weaves, mark the pavilions. Subtle lighting illuminates the columns, reminiscing the tree barks. On the first level, an arresting seven feet light fixture, inspired by the husk of the coconut tree, serves as the focal point.



JURY COMMENT

When the product gets woven into the designed space, craft stands out as a beacon of hope



A DYNAMIC NARRATIVE ART AND COLOUR

RETAIL INTERIORS

AWARD

COMMENDATION

CATEGORY

RETAIL INTERIORS

PROJECT NAME

WHITE TEAK COMPANY

PLACE

BENGALURU

FIRM

CHOREOGRAPHY OF SPACES

DESIGN TEAM

ARCHITECT GAURAV SAREEN

When the requirement was to create a retail space for a self-illuminating product, lighting, Architect Gaurav Sareen of Choreography of Spaces decided to work on a central theme of concealment and revelation by incorporating a systematic series of layers into the space. The objective was to prevent an overwhelming display of products and instead create an environment where the lights and the artworks in the décor, team up to become an integral component of the overall spatial design.

The design manifests as a deliberate manipulation of the depths, which is achieved through layers accentuated by the artworks, highlighter colours of green and red. The design features as an intentional introduction of controlled randomness manifesting within the systematic series of partitions, which work to create an ever changing, engaging circulation. This makes every visit to the store unique by unfolding a different visual journey as the customer walks through to browse the products displayed.

By infusing the language of concealment and revelation, by creating the partitions, the store not only unfolds to be dynamic but also generates fragmented layers that work to create variable depths in the spatial experience. The deliberate manipulation of depth is accentuated by the artworks brought in, dictating the visual experience in the retail store. The introduction of the highlight colours of red and green along with the tropical wallpaper, brightens up the subtle grey hues that serve as the background shades, creating visual interest and enhancing the vibrant tones.

Creating the grids in the spaces, incorporating strategic niches along with stack tables to display the products as well as the décor items, ensures that no two products placed side by side are at the same height of sight. While this arrangement brings in the subtle alterations in the levels to facilitate undivided attention of each product without clutter or overshadowing by another nearby presentation, the challenge was to consider all the surfaces for display where they are self-illuminating, thus creating a visual narrative.



The partitions, while aiding to conceal the existing columns, work to maximise the functionality and efficiency of space usage. Simultaneously an optimal layout is created to highlight each product on display, making each easily accessible as well as visually appealing against the décor they are presented.

Besides the incorporation of the topical wallpaper and highlight colours of red and green to offset the grey palette, the highlight feature of pinstriped black and white tiles on the floor complements the stripes of the zebra and lemur on the wallpaper. Added to this are the display grids in gold and mirror panels which bring a touch of gloss to the visual textures. A wall art along the elevator crafts the way to the entrance, serving as a precursor to the exhibit awaiting in the store.



JURY COMMENT

*When quirk takes
a quantum leap
to create drama.*



hospitality
& interiors
hospitality
& interiors

*Hospitality is making
others feel at home—even
if you wish you were.*

MINIMALISM HEIGHTENING SOPHISTICATION

HOSPITALITY & INTERIORS

AWARD

RUNNER UP

CATEGORY

HOSPITALITY & INTERIORS

PROJECT NAME

IZA

PLACE

BENGALURU

FIRM

BALAN AND NAMBIAN ARCHITECTS

DESIGN TEAM

ARCHITECT ARUN BALAN

The eatery being a pan Asian kitchen, situated within an IT park, the ambience offered required to be deftly addressed as the space was likely to be frequented as much for quick meals during peak hours as it would be for a leisurely lunch or dining, to connect, network as well as unwind. This pointed to crafting a décor which would successfully blend a varied functional usage with an inviting yet unique ambience to designate the eatery as a much sought after fine dining space as much as it meets the practicality of a contemporary IT canteen.

The design that ensued did just that, blending seamlessly the functional needs with a unique aesthetic. The intervention began with removing the existing façade to incorporate a more relaxed outdoor dining alongside the interior fine dining space. This addressed on the outset the distinctive challenges of the IT park environment of the quick meals grabbed at lunch time and during the course of the day to the leisurely dining sought after at late evenings.

The design opted brings in a strong play of light which has a pivotal role in the interiors, where there is a fine blend of natural and artificial lighting impeccably woven into the design philosophy.

The concept executed embraces minimalist leanings in a background that strongly reflects contemporary aesthetics. Reflecting this design philosophy, the interiors are characterised by clean lines, subtle lighting, a refined colour palette, where the dining experience stands elevated, creating an inviting, modern ambience.

Japanese inspired abstract geometric patterns decorate the walls, serving as strong accents that elevate the minimalist leanings to a heightened level of sophistication. The strong play of wood against the sleek metal complements the highlights of earthy hues contrasted by the grey tones, lending a charming contrast to the minimalist décor. Going with the language of clean lines, the fittings and furnishings speak of minimalism, yet take on a sophistication that makes the spaces to stand apart in terms of warmth and aesthetic appeal.

The crux of the design was to go beyond merely designating a dining venue inside an IT park, offering a design innovation that meets amply the specific functional demands of this space and locational challenges. This design intent translated as an elegant fusion of style and practicality that would ably meet the dynamic environment of an IT park.





JURY COMMENT
*Hospitality is not
 about changing
 people, it's creating
 space where change
 can happen*



HARMONIOUS FUSION OF ART & COLOUR

HOSPITALITY & INTERIORS

AWARD
RUNNER UP

CATEGORY
HOSPITALITY & INTERIORS

PROJECT NAME
RESERVOIRE

PLACE
BENGALURU

FIRM
STUDIO CAMARADA

DESIGN TEAM
ARCHITECT ANDRE CAMARA

The design of the resto bar emerged from a deep appreciation of the context of the site and the potential that the terrace held in terms of hosting a vibrant space to unwind. The intervention began with stripping down the interiors to create a dynamic layout featuring a mezzanine, a central retractable roof and an expansive terrace. The design balances effectively both spaciousness and intimacy, offering a fresh perspective on blending open-air design with nature. The narrative that ensued is one of art, nature and architecture converging seamlessly over the 6500 Sqft of space spread over three distinct levels to seat over 300.

Drawing inspiration from the surrounding flora and fauna, the concept of a reservoir was drawn up to weave around the design. This indicated creating a sensory journey that intertwines with luxury, a strong sense of creativity wrapped thickly in nature. With a large waterbody along with the presence of flora and fauna being an integral part of the concept of a reservoir, the design required creating a green oasis and opening up this oasis to the sky. The infusion of a strong presence of art, natural materials and textures, the presence of the retractable skylight was the result of bringing in this narrative.

The entry is greeted by a dramatic double height volume space that is further accentuated by the retractable roof

to open the space to the sky, inviting copious natural light and ventilation. The terrace seating area is suffused in greens, with its lush tropical foliage serving as a serene escape from the congested urban milieu. The open design combines natural textures and organic elements to effuse a sense of tranquillity.

Complementing this is an abounding presence of art in the interiors, notable amongst them being a colossal set of wing sculptures that soar above the central space to become the defining visual centrepiece. Hand painted artworks, fabric prints, sculptural extravaganza turn the space into one where creativity is celebrated at every turn.

Accentuating this art are the textures that feature as the backbone of the restaurant's interiors. Starting from the intricate knife art to the elegant block printed fabrics and stone cladding, the interiors come alive with their rich textural speak. Natural materials such as stone, wood, find their presence significantly in furniture and light fixtures such as the terrazzo tabletops, effusing the earthy vibrant colour palette.

The highlight of the restaurant is the seamless integration of architecture with the natural environment by creating the lush green terrace, the tropical courtyard, all of which serve as an oasis, breaking away from the concrete congested



language of the city. Featuring amidst this is a central stone water fountain, the soothing sound of flowing water serving as a balm to the tired nerves. The vibrant greenery, copious natural light and the natural textures combined with the display of stunning art, deepens the sensorial experience, creating the perfect ambience to unwind and enjoy a meal.

The sensorial experience gets further amplified on ascending the mezzanine floor where the bridge over the courtyard permits a connect with the overflowing greenery and the floors below. The vantage spot serves as a perfect space to experience the indoors and outdoors amidst lush greens, leaving the senses in a tranquil state. The tropical wallpapers and textured green shades enveloping the walls complement the printed fabrics and furnishings.

JURY COMMENT
A space which speaks of brewing ideas and spirited vibe



Institution *Architecture* & Interiors

*“Architecture is about giving shape to
the places where people live and work,
where they learn and dream.”*

- Renzo Piano

CONTEMPORARY WITH A CLASSICAL GRANDEUR

INSTITUTION ARCHITECTURE
AND INTERIORS

AWARD
WINNER

CATEGORY
INSTITUTION ARCHITECTURE AND INTERIORS

PROJECT NAME
ST. JOSEPH'S COLLEGE OF LAW

PLACE
BENGALURU

FIRM
BETWEEN SPACES

DESIGN TEAM
ARCHITECT PRAMOD JAISWAL

The building was to come up in a small parcel of land measuring a little over an acre, in one of the oldest educational campuses in the city. A busy road abuts the south side while an existing older block features on the western side. A playground features on the north along with an open space left on the eastern side for future development. The site composition entailed going vertical to accommodate the requisite functional spaces instead of a sprawling horizontal design typical of the erstwhile Catholic institutions that the upcoming building was part of.

The final design that emerged was thus influenced by four key factors, the tight urban space allotted, the strong heritage roots of the institution and the history of the campus, the young vibrant users of the space and the program the building was to cater to. The oldest building in the campus incidentally had been built in 1910, with the upcoming building expected to bear similar architectural expressions as the heritage building.

However, instead of going in for a Greco-Roman architecture, it was decided to emulate the scale, structural rigour and grandeur of the classical order, packed into a contemporary building. This design leaning is amply evident in the strong

sense of order, the robust masculinity of the structure, amply evinced in the repetitive window fenestrations. A series of semi-circular corbelled arches anchors the large mass of the structure to the ground where the arches and the wedge-shaped fenestrations transfer the visual weight to the ground.

A 1000-seater multi-purpose hall occupies the ground and first level, with the classrooms featuring above arranged on either side of a 25 feet wide corridor. To permit entry of ample natural light and ventilation into the core of the building, large incisions feature between the classrooms. Further, the corridors are staggered on alternate floors to permit communication between the levels. This central spine becomes a vibrant community space, encouraging chance encounters and interactions within the building. Double height spaces also feature on two levels to create break out spaces which in turn connect the central spine to the exteriors.

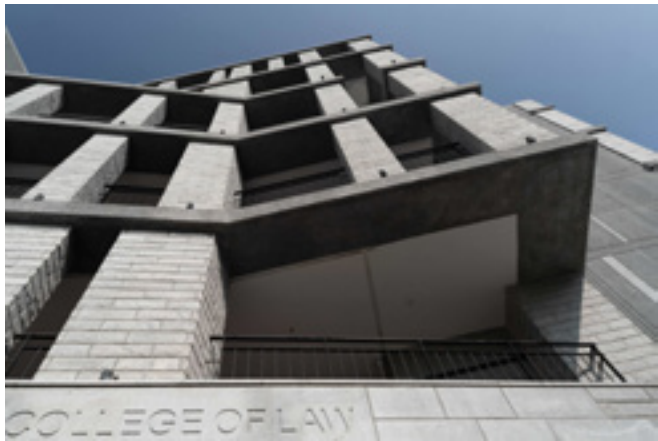
The challenge in the building was to keep this 150 feet long 1000-seater hall, column free, where the space is 100 feet wide between the outer edges of the columns. The hall also needed to be acoustically treated to host cultural events



besides hosting a basketball court. The structural intervention that eventually ensued was a Vierendeel system where each column along the eastern and western sides branches into vertical and diagonal members to support the floors above by suspending secondary support members.

What then manifested was a magnificent double height column free space at ground level, flanked by large branching columns which then taper in the upper floors to reveal a dramatic structural feature in the breakout spaces and common areas. Accentuating this is the form finished Vierendeel columns and the treatment of the arches in the façade against the stone clad walls, lending a vocabulary that is in sync with the new, yet resonates strongly with the heritage structure featuring in the campus.

The project thus successfully blends in history in a modern statement, creating a powerful visual and functional identity for the new building, enriching the architectural narrative of the campus.



JURY COMMENT
*When architecture makes you feel
different that you belong*



A DYNAMIC PROGRAM TO STIMULATE

INSTITUTION ARCHITECTURE
AND INTERIORS

AWARD

RUNNER UP

CATEGORY

INSTITUTION ARCHITECTURE AND INTERIORS

PROJECT NAME

HARVEST INTERNATIONAL SCHOOL

PLACE

BENGALURU

FIRM

PARIVARTAN DESIGN STUDIO

DESIGN TEAM

ARCHITECT ASHISH CHOUHAN

The site was located amidst serene agricultural fields, offering an idyllic setting for the young learners for whom the built space was to be designed. The building proposed was a primary block in an already existing institutional campus of 2 acres. The budget allocated was tight and called for careful planning and use of low maintenance materials. The proposed block measuring 50x120 was to come up directly in front of an existing building that comes with a blank façade, disconnected from the adjacent football field.

With the intent to offer a more engaging presence in the campus, the new building was designed to create an engaging dialogue with this football field, sparking curiosity as well as engagement. The architecture of the new edifice blends in the old with the new, creating a dynamic flow of both space and visual appeal for the user. This design intent begins at the entrance staircase which becomes an arresting feature by offering a grand multi-purpose entry besides striking a dialogue with the football field.

The aesthetically pleasing staircase with its striped patterns of light and dark granite, transcends functionality to double up as an amphitheatre for small gatherings and presentations besides also serving as an informal space for interactions. Given its vantage positioning overlooking the football field, it serves as the most sought seating area

to view sports activities of the school. To the left of this staircase lies the entry way to the existing older building while on the right side lies a semi-covered play zone for the Montessori school, offering a protected, yet stimulating environment for the children.

Given the façade being west facing, the design features as three distinctive segments. On the north-west, a large 30 feet slab is built to house activity areas on each floor, coupled with greens to infuse warmth and an earthy flavour for visual appeal. The building comes with an irregular façade that is artistically angled to lend beauty while addressing the functionality of shielding the interiors from excessive sunlight. The angled walls of the façade also create a play of shadows across the exteriors of the building, with the main gate complementing this through its tensile fabric and aluminium sheets bringing forth a similar play of shadows.

The corridors are designed to be staggered from west to east so as to permit unhindered filtration of sunlight through the floors. To break the monotony of the linear corridors, a colour scheme is applied, with red specifically featuring on the vertical circulation zones. The colour palettes used are pastel, the colours nature inspired. Planters at the end of each corridor imbue the freshness of greens, keeping the connect to nature intact.

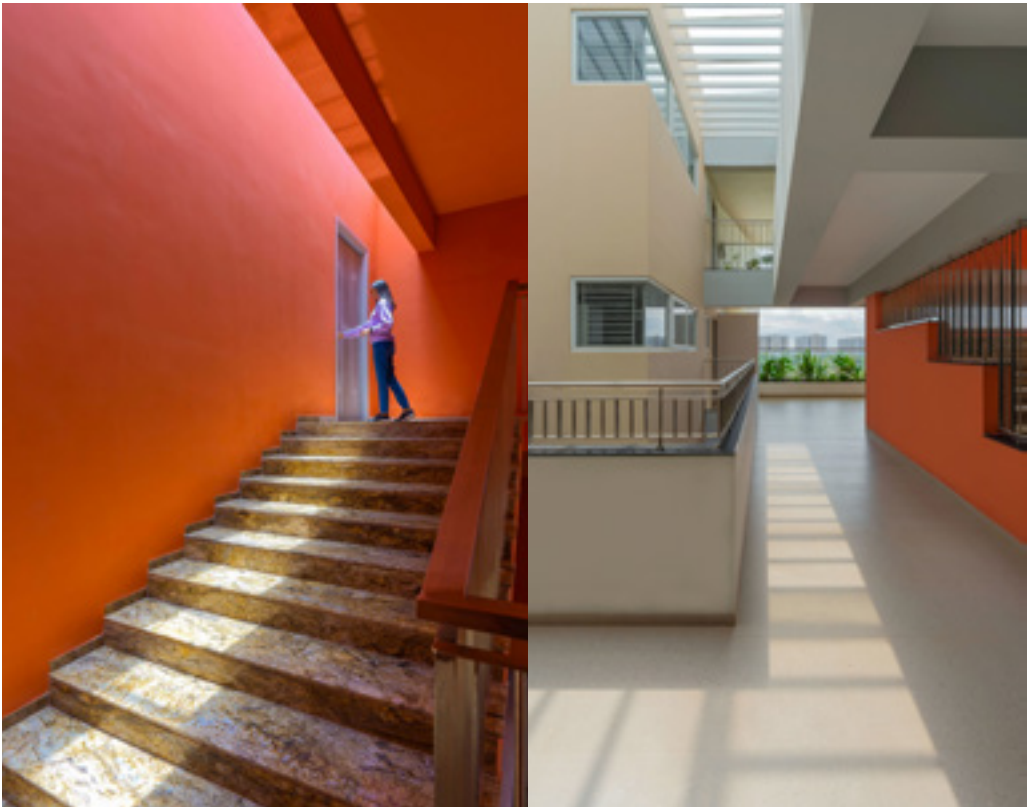


To create a specific zone for interaction, play area as well as storage space for various materials in the Montessori section, the circulation zone was placed at the centre, with the storage shelves moved to the edges. To offset the presence of corners, curves and arches were brought in, with shapes and colours breaking the monotony of the space while making it lively and interesting for the young users. To further make the vertical spaces interesting as well as functional, the walls were turned into pinup boards with a space theme, articulated by colours and shapes in this interactive, vibrant discussion space.

The children's library features as yet another burst of colour and creativity, urging the young minds to engage in exploration and discovery. The array of vibrant hues was specifically incorporated to evoke and inspire the sense of awe and curiosity. The library artfully blends practicality with playfulness, stressing on the importance of creativity and imagination, sparked by a visually stimulating experience. The seating modules pack in storage spaces, the overall design tuned to creating an inviting, flexible learning environment.



JURY COMMENT
*There is a reason we
do not see the world
black & white, colours
enhance our emotions,
great way to nurture
young minds*



PSYCHOLOGY OF SAFETY THROUGH MATERIALITY

INSTITUTION
ARCHITECTURE
AND INTERIORS:

AWARD

COMMENDATION

CATEGORY

INSTITUTION ARCHITECTURE AND INTERIORS

PROJECT NAME

NIRBHAYA CENTRE

PLACE

BENGALURU

FIRM

ARCHITECTURE DIALOGUE

DESIGN TEAM

ARCHITECTS VIKRAM DESAI, HARPREET KAUR,
SREENATH VINAYAKUMAR

The project entailed designing a space that would serve as a safe haven for traumatised women and children. The design approach hence needed to be sensitive to address the psychology of the inmates who would be residing within, offering a sense of safety, easy approachability and visual connectivity between the spaces and levels where there is copious infiltration of natural light to lend the feeling of security.

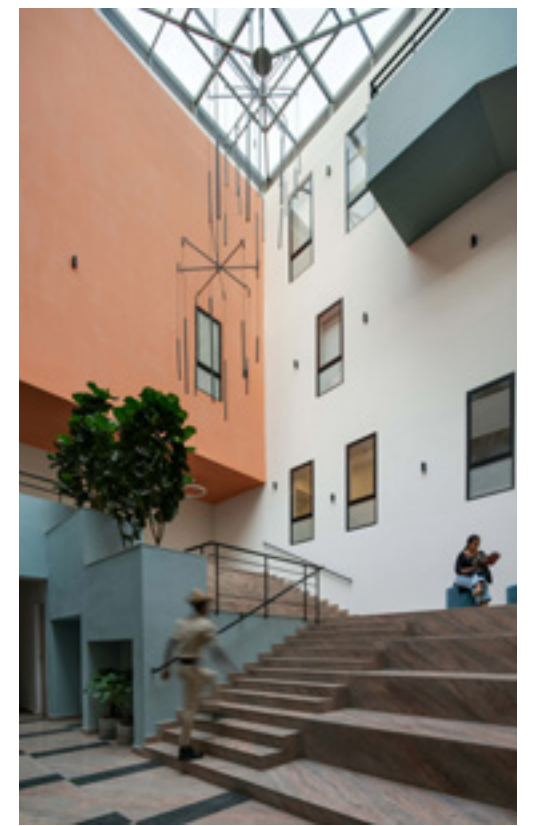
The building houses the Command-and-Control Centre (CCC) for safe city project Bengaluru where women and children can find a safe haven when in trouble. The scale, materiality and colours opted were in keeping with the requirement to provide a warm welcoming place that maintained privacy and was not intimidating to the traumatised individuals for whom it was intended. The building comes with an inverted triangular roof structure that stands out in its structural form, complementing the warm earthy textures of the exposed brick exteriors. Built as two wings, the building has a common arrival space with separate entrances on either side.

One wing housing the Integrated Support Centre for Women and Child (ISCWC), occupies half a floor at the ground level and half on the first level. The rest of the building houses the CCC. At the ground level features the reception area,

lounge spaces and briefing halls for task force while the first and second levels accommodate the offices and technical support rooms. The ISCWC wing comes with a separate lounge at the ground level for women and children with counselling and medical rooms fused in. The upper level is dedicated for their temporary stay, featuring as dormitories as well as private rooms with toilets, laundry, kitchen, dining space.

To address safety, each wing comes with a separate staircase and lift, restricting movement across the wings by eschewing with connecting doors between the two. Given the core functional requirement of the building to let the inmates feel safe to address their psychological insecure feeling, the design principle used adopts this in totality. The atrium, featuring as the heart of the building, is used for communal congregation, ensuring this central area is always active and spreads a feeling of positivity and security.

The multiple sections of the building open into this atrium to offer a visual connect into this perennially active space. By letting all the floors open on to this central courtyard, the ample natural light flooding into this central space automatically permeates into the individual rooms, accentuating the positive secure feeling. Further, the



presence of the atrium makes navigation easier by enabling to identify individual spaces and pathways structured around it, as also reducing the possibility of dark, tucked away circulation spaces.

The exterior walls are in brick, aiding to reduce heat gain while the strategically placed windows draw in ample fresh air. Passive cooling is in place with the vents on the atrium roof sucking out the hot air, creating a stack effect where the fresh air is drawn in through the windows and hot air

exits through the vents. This cross ventilation minimises the dependency on artificial cooling. With abundant natural light permeating inside through the central courtyard, the need for artificial lighting too is reduced or dispensed with. The materiality opted is natural materials which are timeless, earthy and sustainable. The bricks, stone, wood, glass and metal come together to articulate a language of simplicity, sustainability, positivity, where the psychology of the inmates is sensitively addressed by the subdued tones of the spaces.



JURY COMMENT
*Using Facade & Spaces and
relatable material to add value to
emotional well being of the end
user is design*



Office

“As an architect, you design for the present, with an awareness of the past, for a future which is essentially unknown.”

- Norman Foster

Space

Interiors

VIBRANT *AND* FUTURISTIC

OFFICE SPACE INTERIORS

AWARD

WINNER

CATEGORY

OFFICE SPACE INTERIORS

PROJECT NAME

FELICITY

PLACE

BENGALURU

FIRM

BALAN AND NAMBISAN ARCHITECTS

DESIGN TEAM

ARCHITECT ARJUN U NAMBISAN

The brief shared for the design of the marketing office for the real estate group was crystal clear; to double up as a reception area for the mock up apartment as well as serve as an experience centre in terms of the design leanings of the real estate group. The objective was to curate a marketing office space that would offer an extraordinary experience, from the moment of stepping into the space until reaching the mock-up unit.

Keeping this vision in perspective, the structure and interiors were designed meticulously to infuse plenty of natural light, a seamless connect to the exteriors, ample connect to the greens along with a strategically placed waterbody to lend life and vibrancy to the spaces. The structure comes up as a fusion of metal, glass and exposed concrete, the grey tones of the flooring blending into this theme seamlessly.

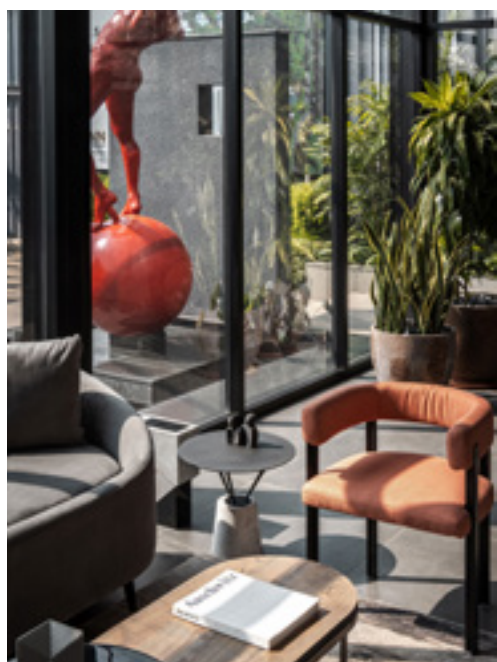
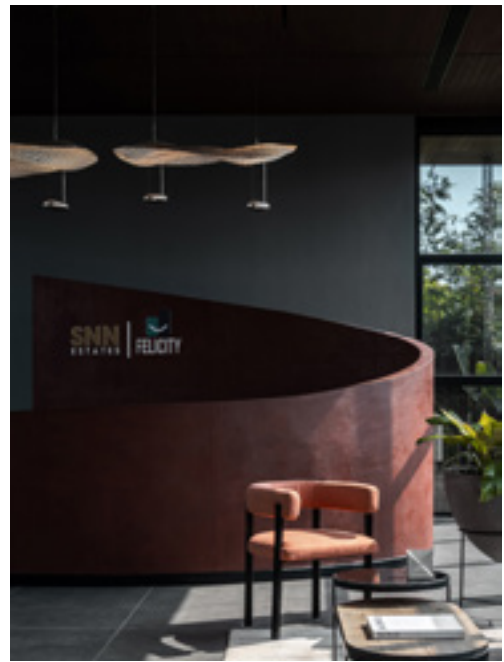
The design leanings of the furnishings and light fixtures are modern and futuristic, the neutral tones combining with the metal and wood frames to offer a sleek, minimalist contemporary interior that is accented by dashes of colour and greenery to cheer. The marketing office is methodically designed to bring in the vital components such as a welcoming vibrant reception area, large

interactive discussion spaces to engage the visitors. To address the needs of confidential meetings, private cabins overlooking a refreshing waterbody and greenery is provided.

A cutting-edge AV room provides the strategic space to showcase the projects of the real estate company, the design serving as a representative of the brand image the real estate group intends to project. In short, the architectural and interior design of the marketing office was expected to serve as the face of the brand, by directly interacting with potential customers and giving them an immersive experience of what the group has on offer.

The space thus is conceptualised to embody both innovation and sophistication in terms of the layout, the furnishings, the modern futuristic leanings of the striking reception area making a lasting first impression. The dynamic discussion zones follow suit in their design address, bringing along the carefully curated spaces of the private cabins that afford an exterior connect to waterbodies and greens. The state-of-the-art AV rooms are not far behind with their futuristic experience.





JURY COMMENT
*Space is an influential
 concept which allows
 you to dream Big*



TREADING LIGHTLY *WITH* AN OPEN PLAN

OFFICE SPACE INTERIORS

AWARD

RUNNER UP

CATEGORY

OFFICE SPACE INTERIORS

PROJECT NAME

HIGH GARDENS

PLACE

BENGALURU

FIRM

STUDIO GSA ARCHITECTS

DESIGN TEAM

ARCHITECT GAURAV PANJWANI

Designed for a marketing office for a real estate group, the built space treads lightly with its lightweight roof, steel structure and expansive glass walls that open the interiors to the landscape, visually inviting the greens enveloping the building. The sensorial experience features in abundance as one approaches and enters the built space, the rustle of the leaves, the fragrance of the blooming flowers and the gentle sounds of flowing water wrapping the senses into a state of serene bliss.

The sensorial experience is further accentuated by the play of light and shadow that happens in abundance in the interiors given the open lay of the spaces and the expanse of glass walls inviting an unhindered entry of natural light. The dynamic play of light alters as the day progresses, keeping in tune with the sun path, adding to the drama of the seamless blending of the indoors and outdoors.

The interiors are characterised by free-flowing open spaces that are segmented deftly to cater to workspaces. The design thus pans out as a series of interconnected areas that transition from closed quiet zones facilitating focused work to open, collaborative areas to address meetings and discussions. Tones of both rustic and warmth feature as wood and stone accents, the earthy hues tying in aptly with the lush green landscape that wraps the built space, thus bringing in a sense of continuity between the interiors and exteriors.

The vibrancy of the exteriors is strongly articulated by the abundant natural light flooding the interiors through the glass expanse, accentuating the thick greens visually soaking the interiors. Being a temporary structure, the design was explicitly executed to ensure the use of steel was minimal in the substructure. The lightweight ceiling sits gracefully on a classical grade beam structure that requires almost nil foundation, thus reducing its footprint on the existing ecosystem.





JURY COMMENT
*Space travel is life enhancing,
 hence worth creating*



Young Practices Young Practices

“Young architects can get carried away by the grand vision. But the world is made of small details. Don’t forget that.”

- Toyo Ito

EARTHY PALETTE, TEXTURAL DELIGHTS ECHO THE SPICY CUISINE

AWARD
WINNER

CATEGORY
YOUNG PRACTICES

PROJECT NAME
ISHTAA

PLACE
BENGALURU

FIRM
STUDIO RUH

DESIGN TEAM
KAVYA SHETH, AR. SHRUTHY SANGHVI

Andhra cuisine is known for its spicy flavours and lavish spread of mouthwatering dishes, be it vegetarian or non-vegetarian. Yet, the ambience served in, has generally proved to be much less inspiring than the cuisine, Interior Designer Kavya Sheth and Architect Shruthy Sanghvi opined. When they were approached to design the restaurant, Ishtaa, serving Andhra style gourmet food, their reaction was to come up with a destination that would draw customers not only for its delectable cuisine but also the ambience in which it was served.

The space offered for the restaurant was a bungalow that had aged significantly, revealing strong signs of degradation in its structure and interiors. Yet, situated in a dense tree-lined avenue, Kavya and Shruthy realised that the structure could be made to come alive to become a much-frequented destination. The intervention began with bringing about first a contemporary sensibility to the jaded exterior of the structure. The interiors were next sought to be curated as an inspiration from local crafts of Southern India. What then unfolded was a space exuding warm hospitality with the nostalgia of dining in a quintessential Indian home.

The exteriors exhibit a fine combination of the rustic and earthy textures, blending in an honest portrayal of raw brick perforations, beige tiles, wide cement steps amidst a row of

lush tropical plants. A magnificent green portal standing 12 feet tall, with meticulously crafted brass handles creates a striking, contrasting entry against the beige exterior of the building. Fine brick perforations and glazing alternate rhythmically on the façade, creating interest while blurring the line between indoors and outdoors.

Complying with Vaastu sensitivities, the interiors are divided into distinct pockets where each offers a unique dining experience. The spaces also incorporate a differential volume that varies between 12 feet and 14 feet high ceilings, with a rich material palette to define the spatial features of each section. The central waiting area houses a stunning floating banana fibre lighting that features in an expansive 5 feet diameter. This is matched by customised light fittings that infuse the floral grandeur into the space. Sconces and handcrafted rattan pendants on the perimeter wall, further add to the illumination.

Extending from this central area is a walkway that leads thence to the expansive dining space lined with brick walls, contrasting the black and green tiled floor. Curved ceilings soften the linearity of the space, complemented by leatherette banquettes and upholstered chairs. A Baffle ceiling defines yet another dining section where rattan banquettes offer an indoor-outdoor dining experience amidst the scattered greenery.



The entire interiors are marked with curved forms, teakwood detailing, soft edges, with an arched portal serving as the restaurant's centerpiece. Booth seating is tucked behind this, nestling into the existing nooks, offering an alcove for groups, couples or single diners looking for a more intimate dining experience. These individual booths are imbued with distinct moods, with the large art and textile installations creating bold focal pause points. Carefully curated pieces such as the traditional Kalamkari prints, hand-knotted rugs dot the spaces.

Given the plethora of textures, earthy colours of browns, reds, greens marking the spaces against the soft ambient lighting, the space exudes an irresistible warmth where the traditional Indian aesthetics is given a charming contemporary twist. In fine, the restaurant serves as a refreshing contemporary take on traditional Indian leanings, to subtly connect to the mouthwatering traditional Andhra fare served in a modern setting.



JURY COMMENT
*Her Imagination gives a preview
of things to come*



A LANGUAGE OF WOOD, CONCRETE & GREENS

YOUNG PRACTICES

AWARD

COMMENDATION

CATEGORY

YOUNG PRACTICES

PROJECT NAME

QUARRY HOUSE

PLACE

BENGALURU

FIRM

CREST ARCHITECTS

DESIGN TEAM

ARCHITECTS VISHWAS VENKAT, VIKAS

An imposing 18-foot cantilever marks the façade of this farmhouse, where the rustic tones of exposed concrete blend with the warmth of wood and freshness of greens. Designed for a family of five, the Vaastu compliant residence is conceived as an open plan where a free-flowing interior connects seamlessly to the exteriors.

The built space, imbibing complex structural engineering, has its footprint restricted to 2500 Sqft on a site area of 6650 Sqft. This called for a design that features as a visually striking stepped arrangement of volumes, with multiple overhangs on the upper floor, enabling the minimalist interiors to meet their specific functions even as they frame the picturesque views of the surrounding landscape.

The Quarry House by Crest Architects evinces strong sustainable leanings, maximising the infiltration of natural light and ventilation, layering with clay tiles for thermal insulation, adopting extensively exposed concrete surfaces to minimise the use of paint. While low-flow faucets reduce water consumption within the residence, the landscape is marked by tactical plantation to increase groundwater recharge. A cantilevered metal beam on the Northeast, while featuring as a structural element, serves as a rainwater collection gutter that empties strategically into a stone pit

in the landscape to address groundwater recharge. Stone steps and pathways merge with this tropical landscape and waterbody, lending a serene aura to the entire residence.

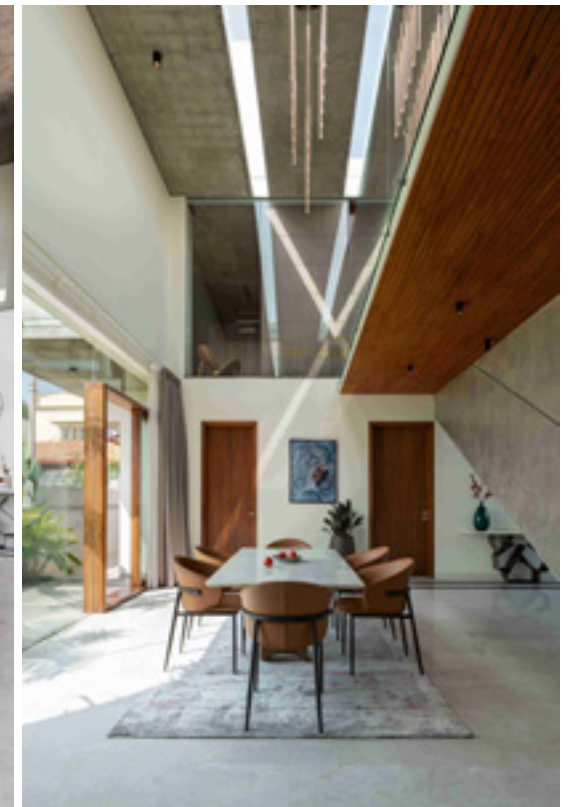
The building displays a strong play of varying volumes in the common areas to create distinctive functional zones. The formal living area and family entertainment zone feature in a lower volume space where the ceiling is deliberately kept lower to lend a warm cozy feel. The dining area comes with a higher volume to enhance the user experience. Strategically placed vents and skylights permit infiltration of ample natural light, enabling the residents to experience the changing seasons as well as the sun path through the day.

The central element of the interior is a cantilevered metal staircase which appears to literally float in thin air, extending elegantly from an angular suspended concrete wall that contrasts a wooden flooring and also demarcates the dining and living areas. Designed to be exceptionally light, this staircase serves as the central highlight as well as the connecting feature of the house, while the suspended concrete wall becomes the dramatic canvas for the dynamic play of sunlight filtering in through the day from the skylight and vents.



JURY COMMENT

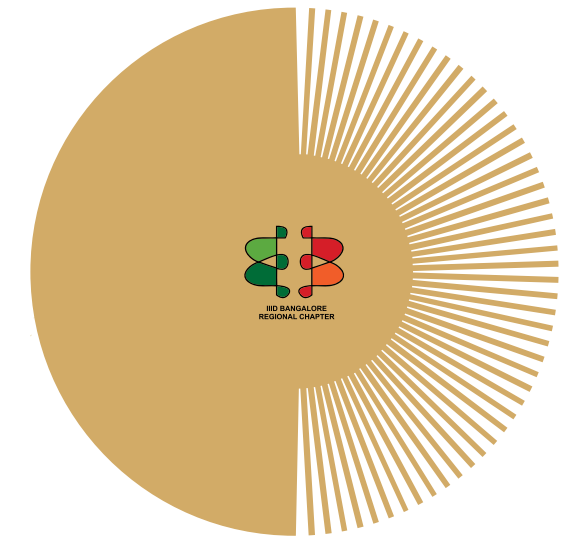
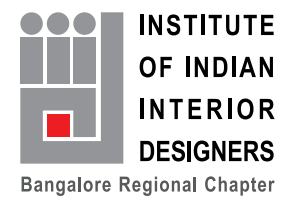
*Creating Indoor
outdoor Spatial
experience seamlessly*



The 18-foot cantilever accommodates on the Southside the guest room while simultaneously providing the shading for the exterior car park. The cantilever on the Northside houses the children's room on the deck, while offering shade for the entertainment zone situated below. Tan and blue tones along with custom designed furniture complement the rugged minimalist language of the exposed concrete in the interiors.

Yet another unique feature of the residence is its differential puja area which delicately floats over a waterbody. Backed by a concrete wall and enclosed in glass, the puja area gets ample natural light to infuse energy into the daily spiritual activities. Segregating the puja area from the formal living space is a sliding partition with built-in storage. The sliding partition also permits the opening up of the space into a single free flowing unit when a larger space is solicited. The master bedroom also comes with a glazed partition that permits a visual connection to the dining area, besides permitting copious natural light to enter through when curtains are drawn aside.





Antarya Regional Awards was initiated by IIID BRC in December 2022 along with Designuru to celebrate the Golden Jubilee of IIID and the 10th year of the design magazine Antarya. The awards have as their focus, a strong emphasis on sustainability and differential address of spaces by architects and interior designers.

Given the primary objective of IIID BRC to promote Social, Local and Sustainable, the award is limited to Karnataka, with the accent placed on recognising and promoting Design Practices based in Karnataka, where the talent base in the Tier I and Tier II cities of the State are duly identified and celebrated. The aim of the awards is to foster participation more than competition, celebrate the unique, different philosophies and thought process.



SUPPORTED BY

